

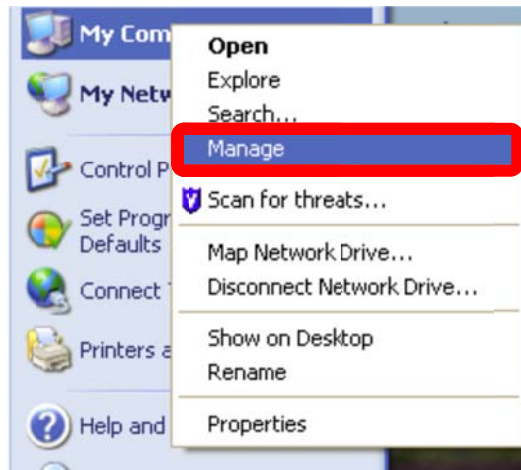
Clubs Wireless Network Configuration Guide – Windows XP

For support contact the DHTS Service Desk at 684-2243 or <https://duke.service-now.com>

How to connect to the clubs wireless network with Windows XP.

This configuration guide requires the use of Windows to configure the wireless settings.

1. Right click on **My Computer** and select **Manage**.

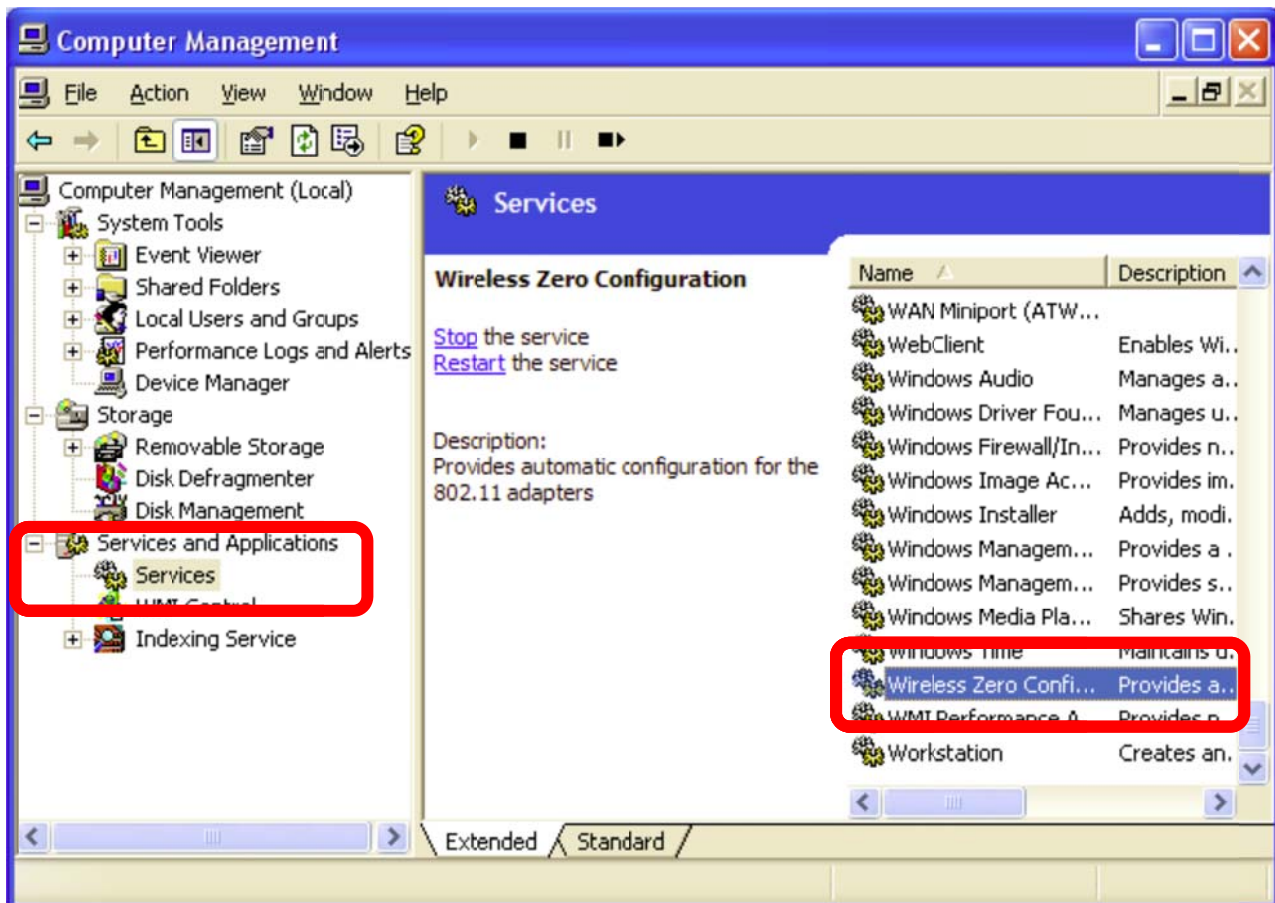


Clubs Wireless Network Configuration Guide – Windows XP

For support contact the DHTS Service Desk at 684-2243 or <https://duke.service-now.com>

2. In the **Computer Management** Window

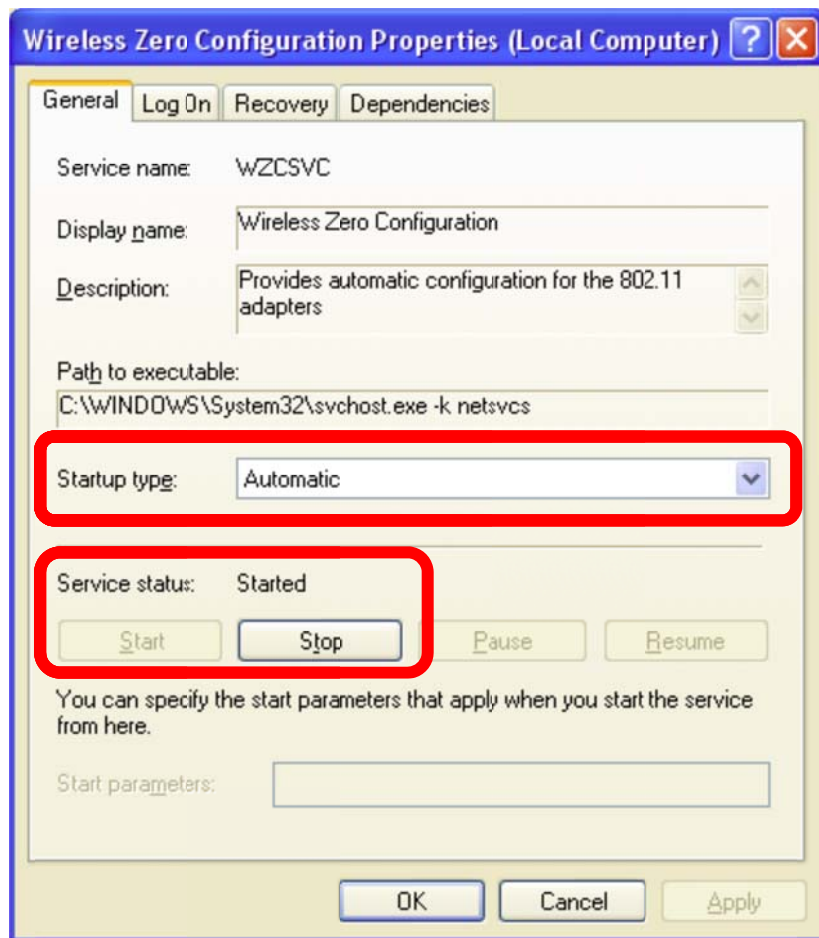
- Expand **Services and Applications** by clicking the (+) sign and then click **Services**.
- On the right side find **Wireless Zero Configuration** in the list of Services; right click on WZC and select **Properties**.



Clubs Wireless Network Configuration Guide – Windows XP

For support contact the DHTS Service Desk at 684-2243 or <https://duke.service-now.com>

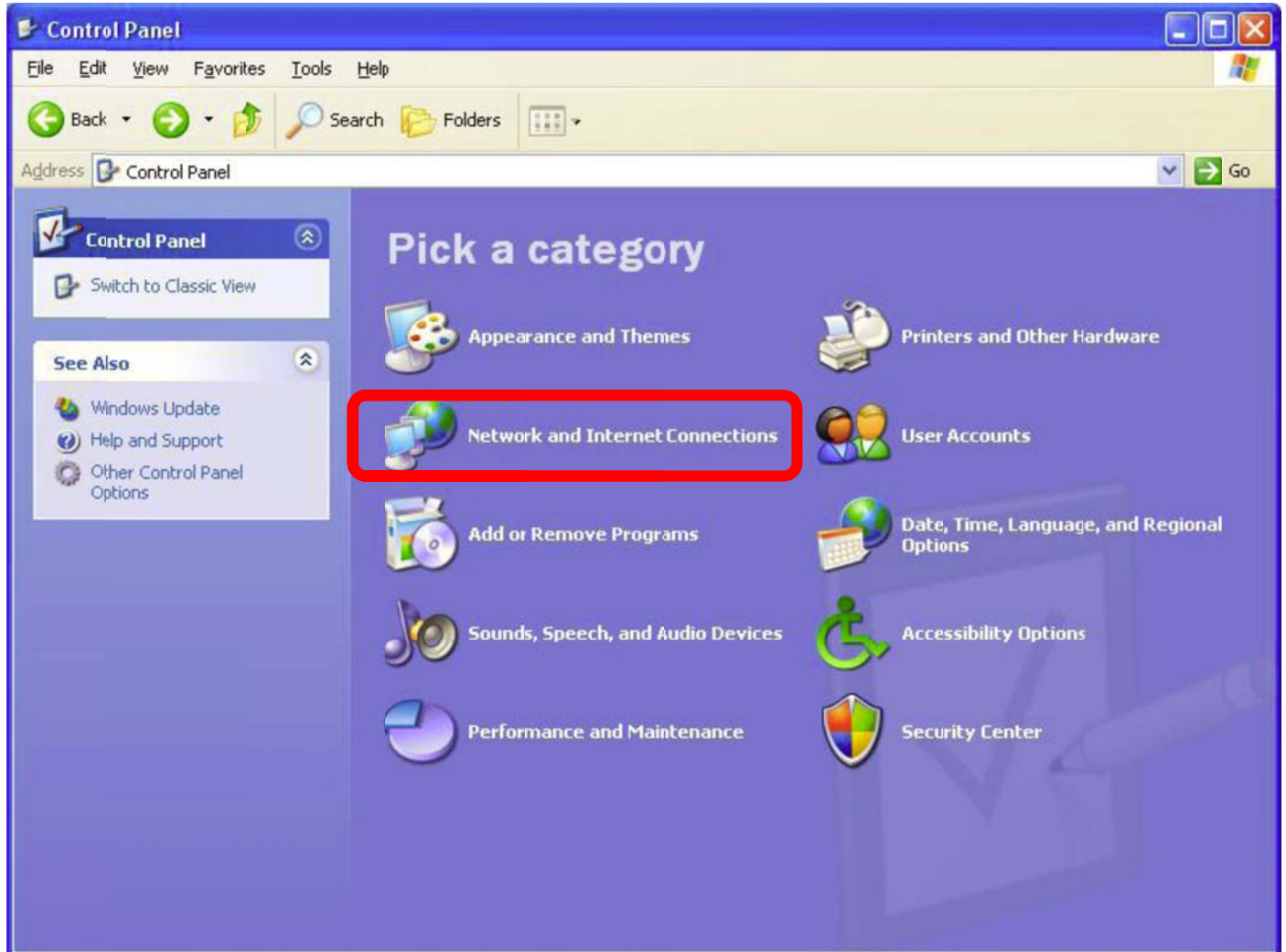
3. The **Wireless Zero Configuration Properties** window will appear.
 - Ensure that the **Service Status** is set to **Started**. If it is not set to start, then click **Start**.
 - Make sure the **Startup type** is set to **Automatic**.
 - Click **Ok** to close this window then close the **Computer Management** window.



Clubs Wireless Network Configuration Guide – Windows XP

For support contact the DHTS Service Desk at 684-2243 or <https://duke.service-now.com>

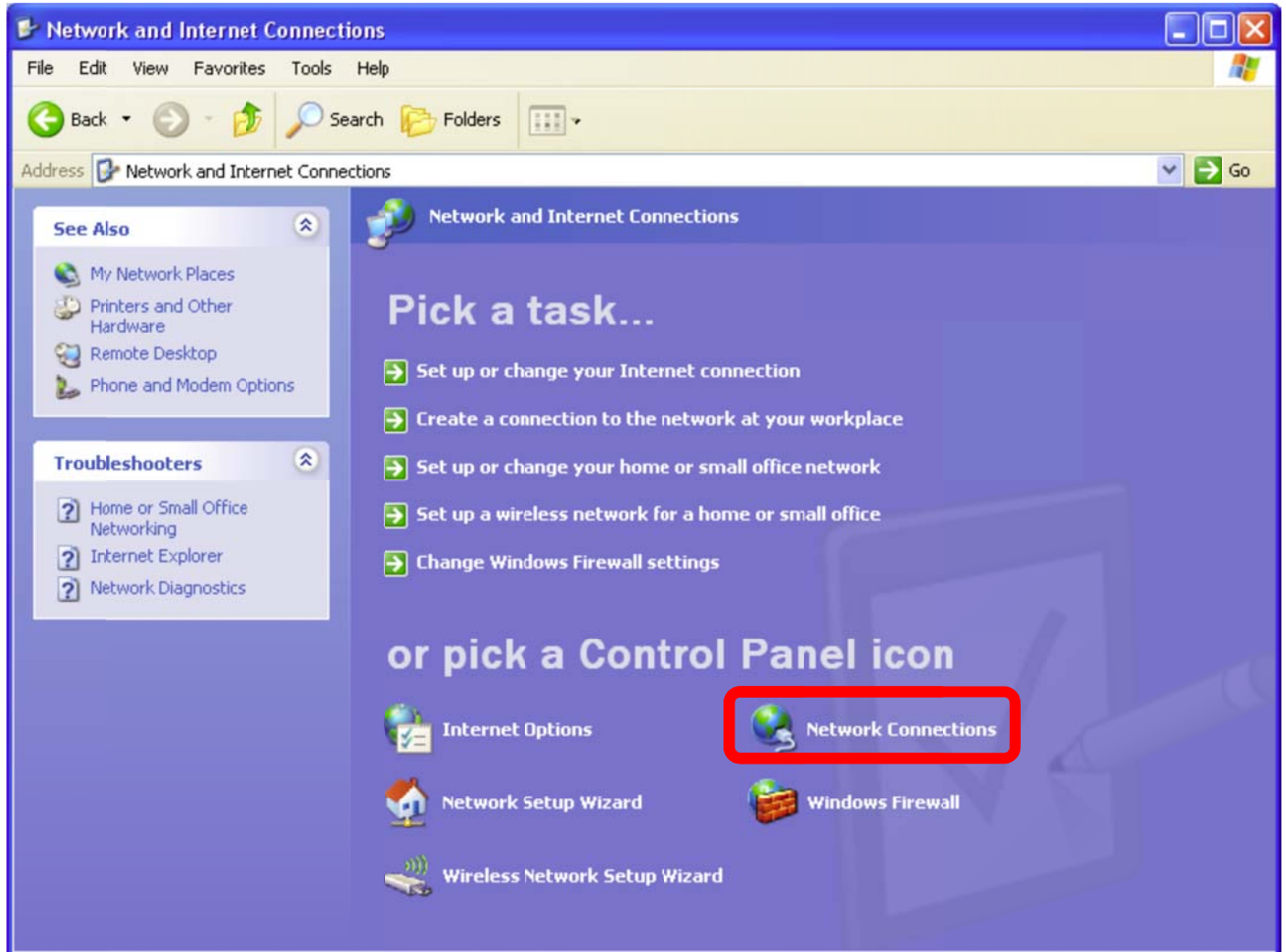
4. Click **Start, Control Panel, Network and Internet Connections.**



Clubs Wireless Network Configuration Guide – Windows XP

For support contact the DHTS Service Desk at 684-2243 or <https://duke.service-now.com>

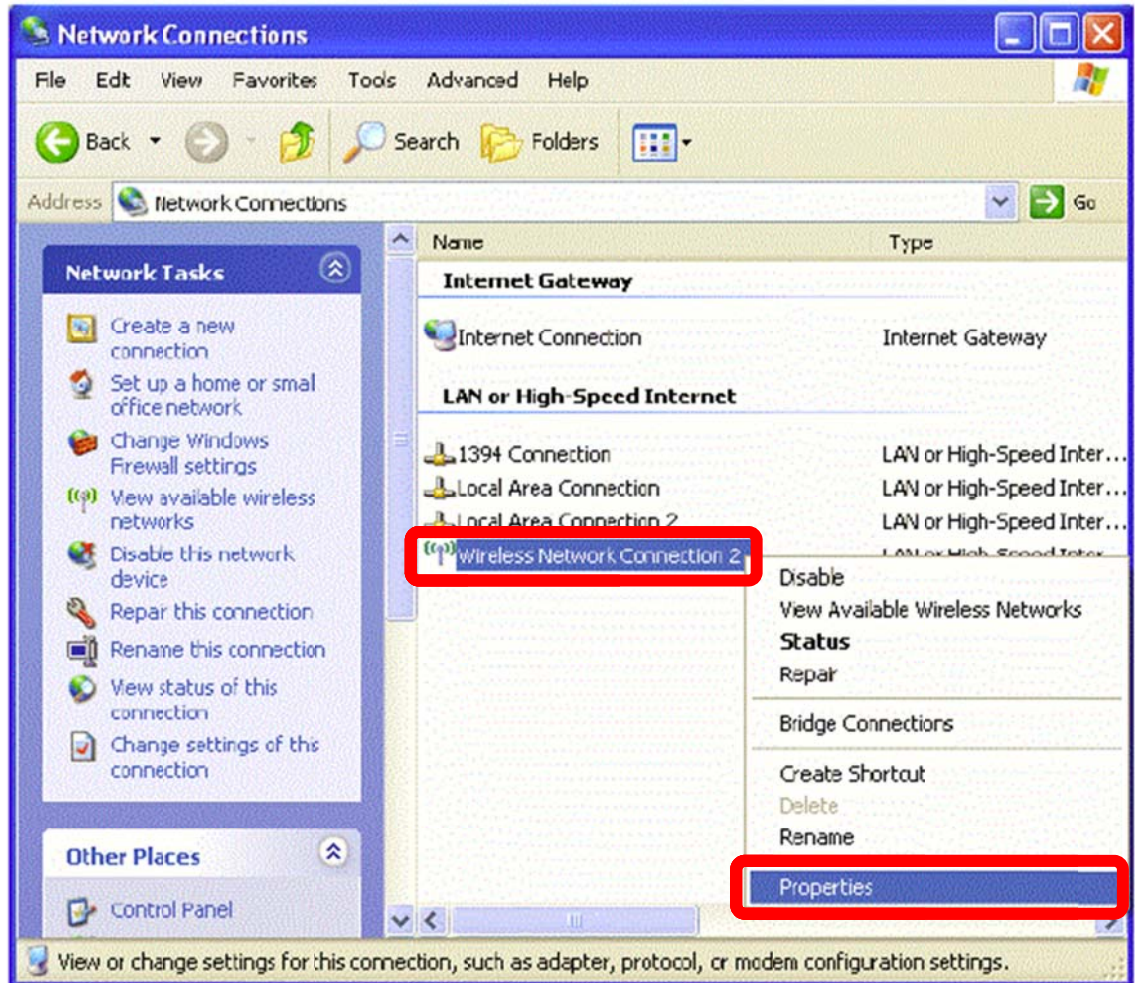
5. Select **Network Connections**.



Clubs Wireless Network Configuration Guide – Windows XP

For support contact the DHTS Service Desk at 684-2243 or <https://duke.service-now.com>

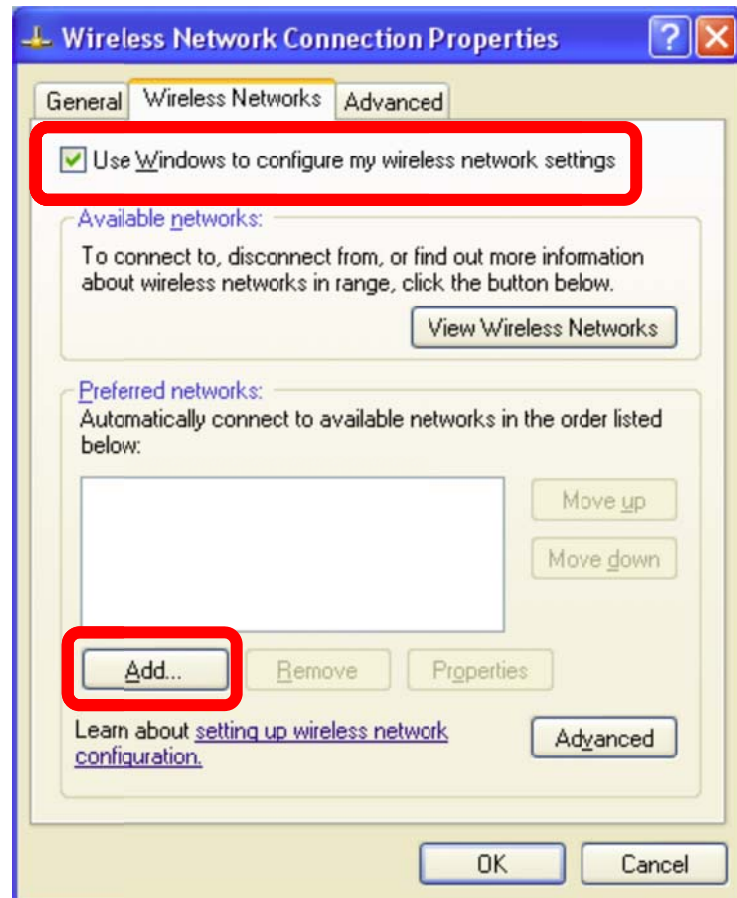
6. Right Click on Wireless Network Connection and select **Properties**.



Clubs Wireless Network Configuration Guide – Windows XP

For support contact the DHTS Service Desk at 684-2243 or <https://duke.service-now.com>

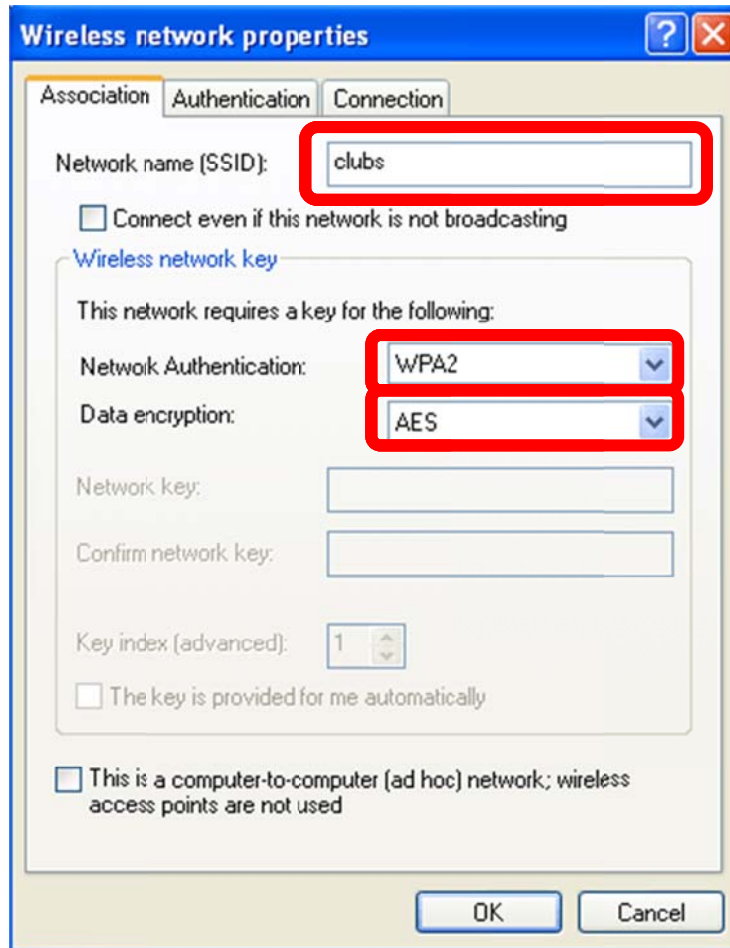
7. Make sure that the **Use Windows to configure my wireless network setting** is checked and then click the **Add** button below **Preferred Networks**.



Clubs Wireless Network Configuration Guide – Windows XP

For support contact the DHTS Service Desk at 684-2243 or <https://duke.service-now.com>

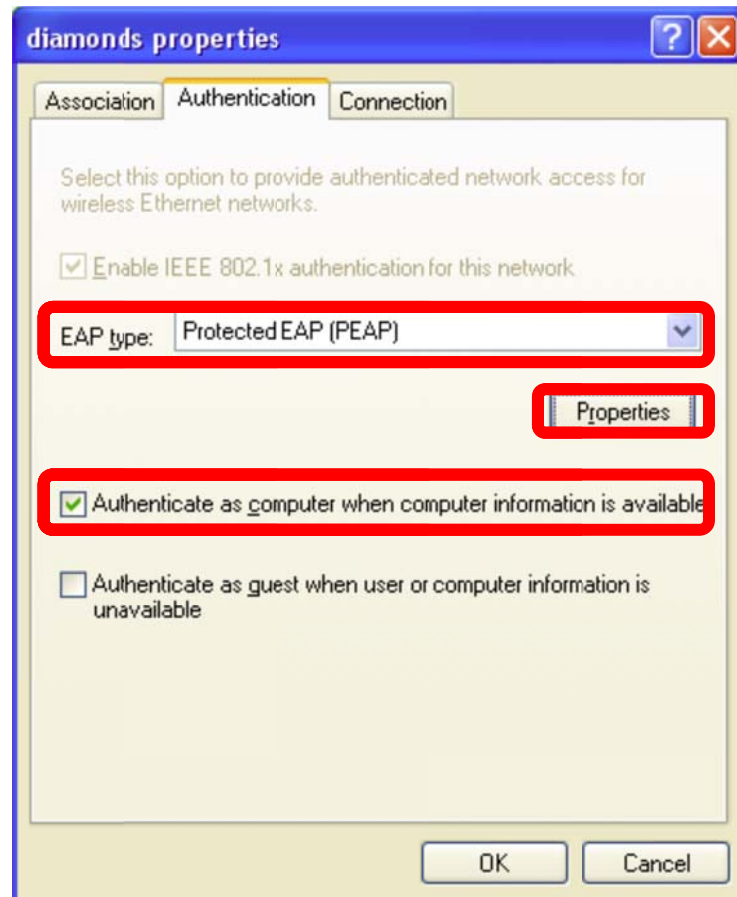
8. In the Wireless network properties window enter the following settings in the appropriate box.
- **Network name (SSID): clubs**
 - **Network Authentication: WPA2**
 - **Data encryption: AES**
 - Make sure that **This is a computer-to-computer (ad hoc) network** is **NOT** selected.



Clubs Wireless Network Configuration Guide – Windows XP

For support contact the DHTS Service Desk at 684-2243 or <https://duke.service-now.com>

9. Click the Authentication tab to configure the required authentication settings.
 - In the **EAP type** drop down box select **Protected EAP (PEAP)**.
 - Check **Authenticate as computer when computer information is available**.
 - **Do not** check **Authenticate as guest when user or computer information is available**.
10. Click **Properties** under **EAP type**.

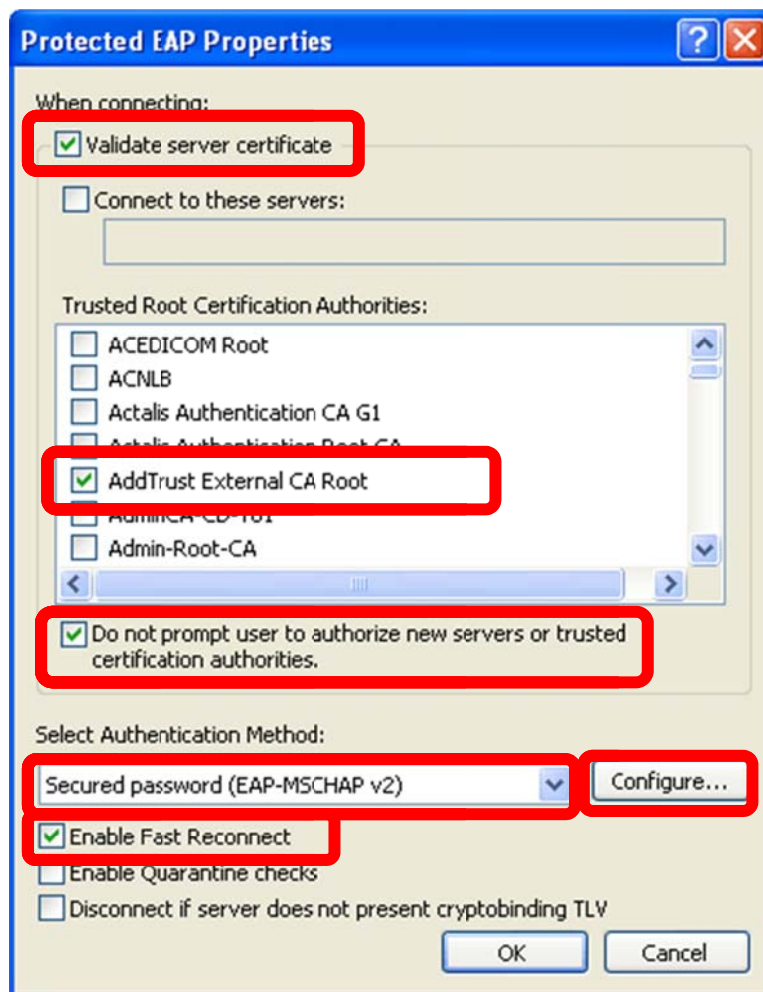


Clubs Wireless Network Configuration Guide – Windows XP

For support contact the DHTS Service Desk at 684-2243 or <https://duke.service-now.com>

11. Configure the Protected EAP (PEAP) Properties settings.

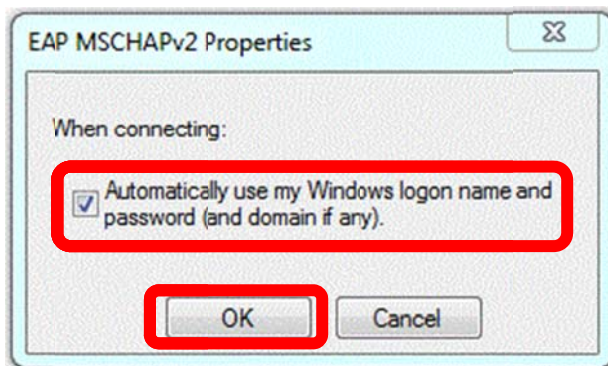
- Check **Validate server certificate**.
- In the **Trusted Root Certification Authorities** list select **AddTrust External CA Root**.
- Check the **Do not prompt user to authorize new servers or trusted certification authorities**.
- Under **Select Authentication Method** select **Secured password (EAP-MSCHAP v2)**.
- Check **Enable Fast Reconnect**.
- Click **Configure** to configure the EAP-MSCHAP v2 properties.



Clubs Wireless Network Configuration Guide – Windows XP

For support contact the DHTS Service Desk at 684-2243 or <https://duke.service-now.com>

12. If your device **connects** to the DHE Domain, then check the **Automatically use my Windows logon name and password** box.



13. Click **OK** to close all the boxes. Then skip to step 19.

Otherwise,

14. If your device **does not** connect to the DHE Domain, then do not check the **Automatically use my Windows logon name and password** box.



15. Click **OK** to close all the boxes.

16. After a few second a balloon will appear prompting you enter additional credentials.



Clubs Wireless Network Configuration Guide – Windows XP

For support contact the DHTS Service Desk at 684-2243 or <https://duke.service-now.com>

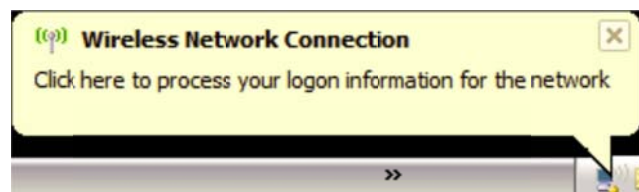
17. Enter your DHE Active Directory credentials.

- **User name:** Your DHE Active Directory username
- **Password:** Your DHE Active Directory password
- **Logon domain:** DHE



18. Click **OK** to close all the boxes.

19. You will see another balloon appear. Click the balloon to validate the server certificate.



20. You should now be connected to the **clubs** wireless network.