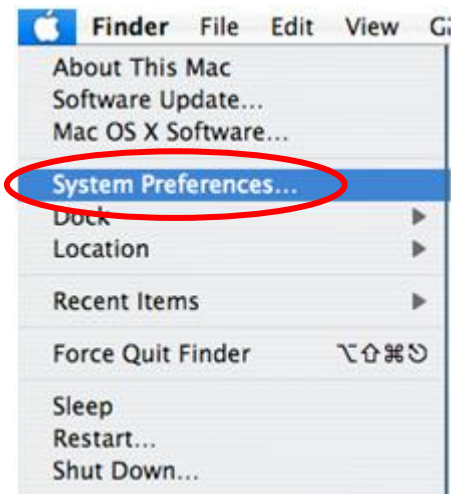


Diamonds Wireless Configuration Guide - Mac OSX 10.4 (Tiger)

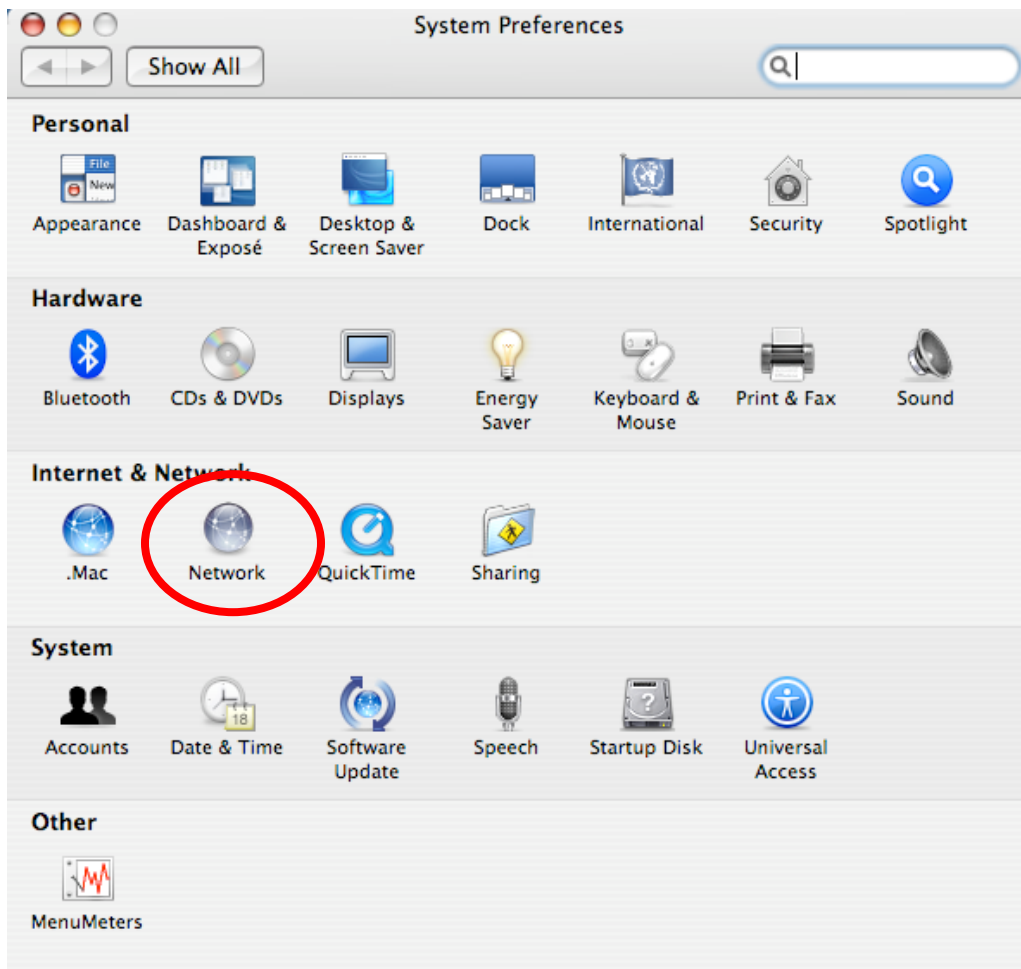
For support contact the DHTS Help Desk at 684-2243 or <https://www.dunk.duke.edu/secure/submit/>

How to connect to the diamonds wireless with Mac OSX 10.4

1. From the **Apple** menu, select **System Preferences**.



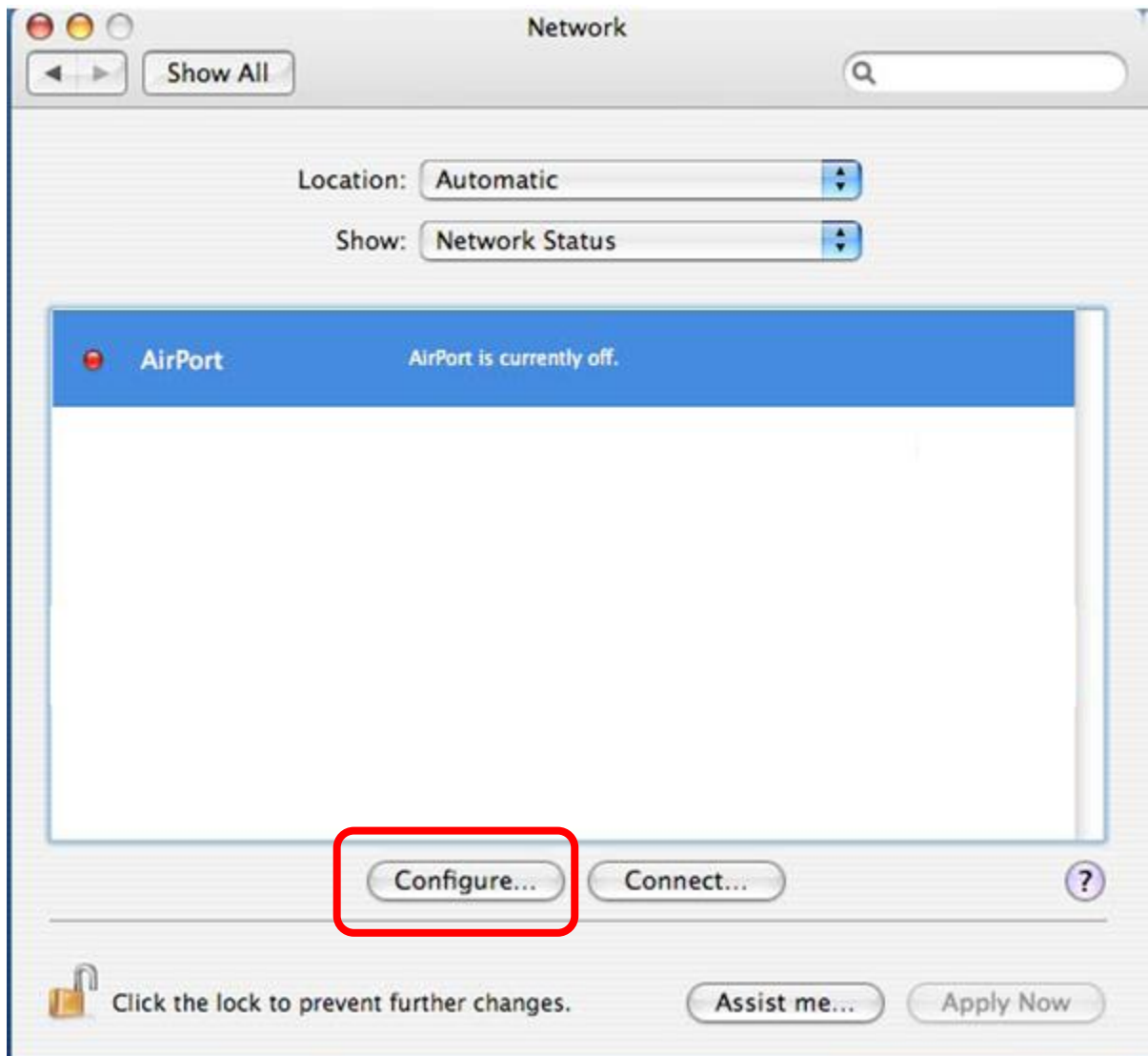
2. Select the **Network** icon.



Diamonds Wireless Configuration Guide - Mac OSX 10.4 (Tiger)

For support contact the DHTS Help Desk at 684-2243 or <https://www.dunk.duke.edu/secure/submit/>

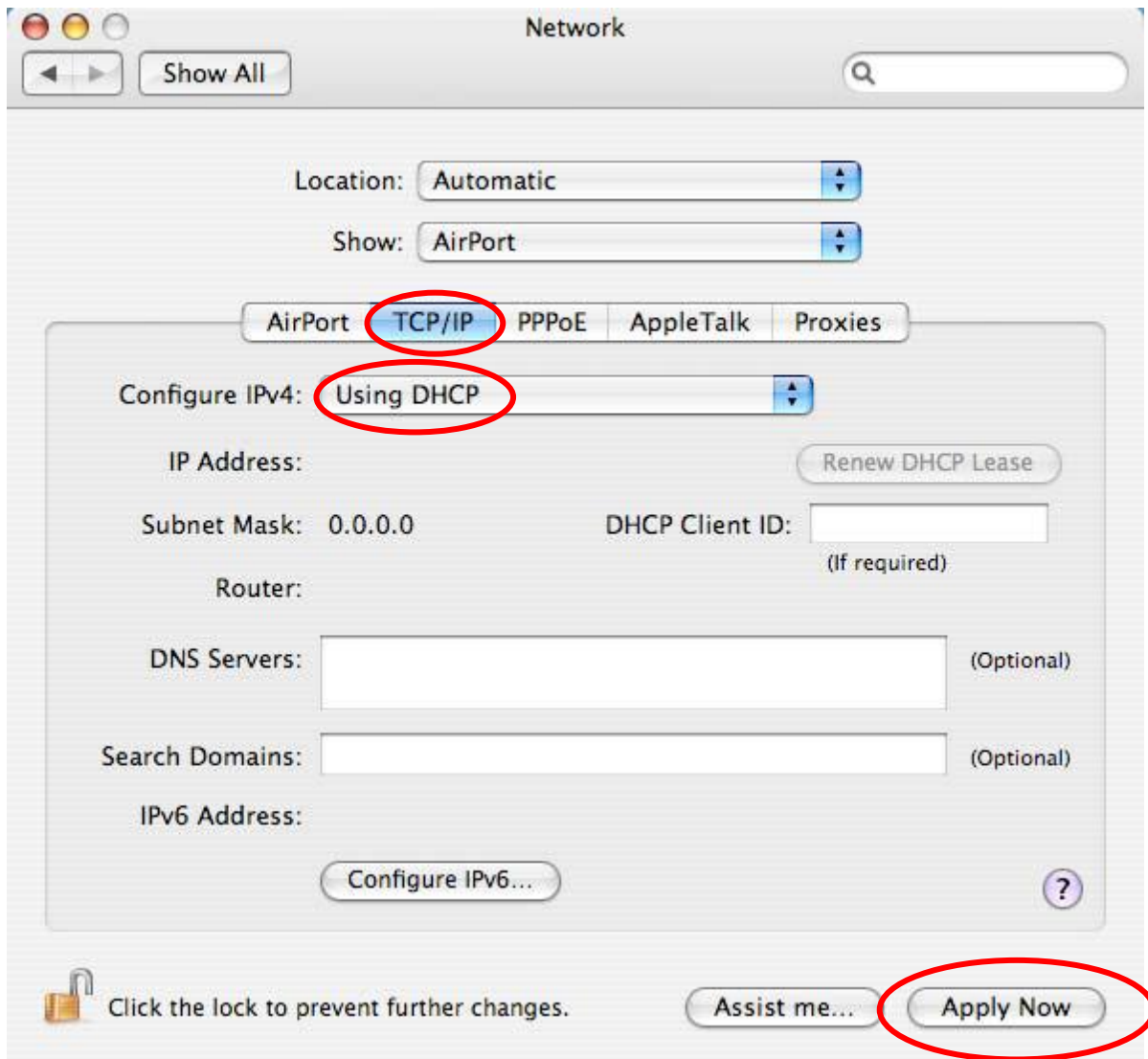
3. Select the **Airport** and click the **Configure** button.



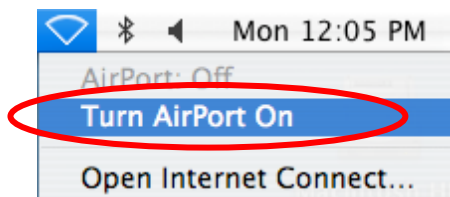
Diamonds Wireless Configuration Guide - Mac OSX 10.4 (Tiger)

For support contact the DHTS Help Desk at 684-2243 or <https://www.dunk.duke.edu/secure/submit/>

- Click on the **TCP/IP** tab near the top of the preferences page.
In the **Configure IPv4** drop down menu select **Using DHCP** and then click **Apply Now**. Close **System Preferences**
If **Using DHCP** is already selected, close **System Preferences**.



- From the **Airport** menu at the top of your display select **Turn Airport On**.

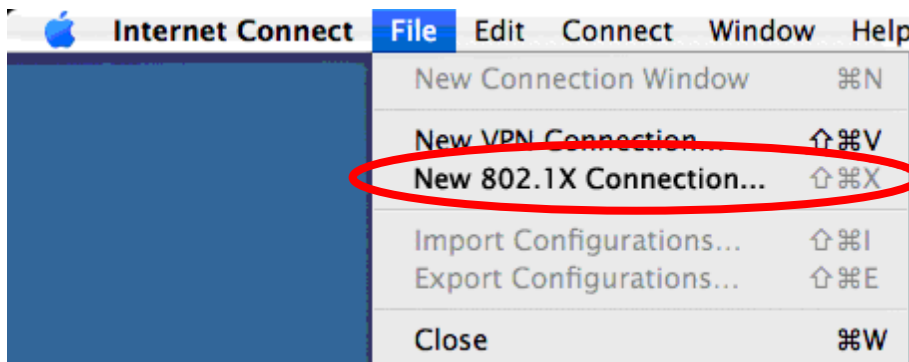


- In the **Airport** menu  select **Open Internet Connect...**

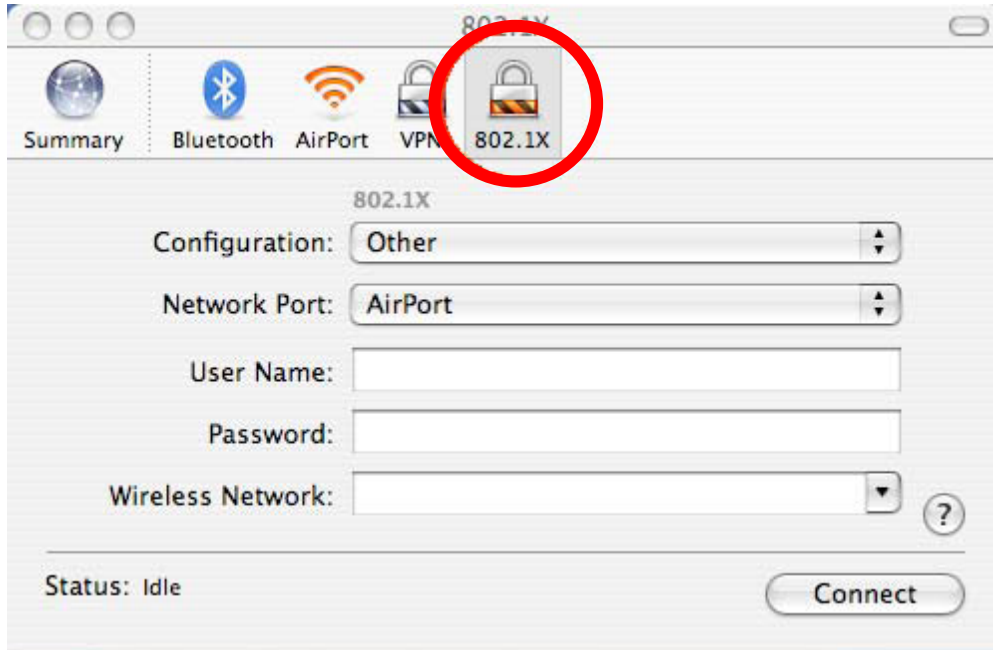
Diamonds Wireless Configuration Guide - Mac OSX 10.4 (Tiger)

For support contact the DHTS Help Desk at 684-2243 or <https://www.dunk.duke.edu/secure/submit/>

7. This step allows you to configure the 802.1x settings. If there is not a 802.1x icon in your **Internet Connect** window then from the **File** menu select **New 802.1x Connection**.



You should now see the **802.1x icon** in the **Internet Connect** window. Click the **802.1x icon** in order to edit the **802.1x** settings.



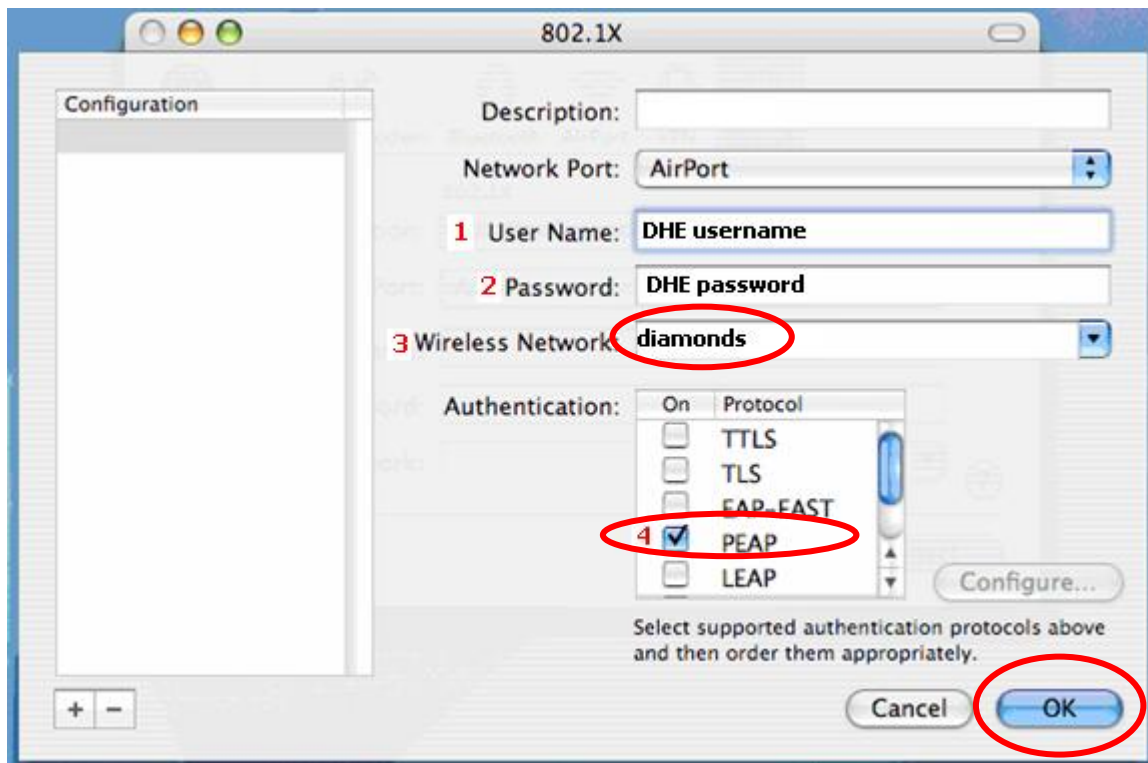
Diamonds Wireless Configuration Guide - Mac OSX 10.4 (Tiger)

For support contact the DHTS Help Desk at 684-2243 or <https://www.dunk.duke.edu/secure/submit/>

8. In the **Configuration** drop down menu select **Edit Configurations**.



9. In the **Configuration** section enter the following:
 1. User name: Your **DHE Active Directory username**.
 2. Password: Your **DHE Active Directory password**.
 3. Select **diamonds** from the **Wireless Network** drop down menu.
 4. In the **Authentication** list make sure only **PEAP** is selected.

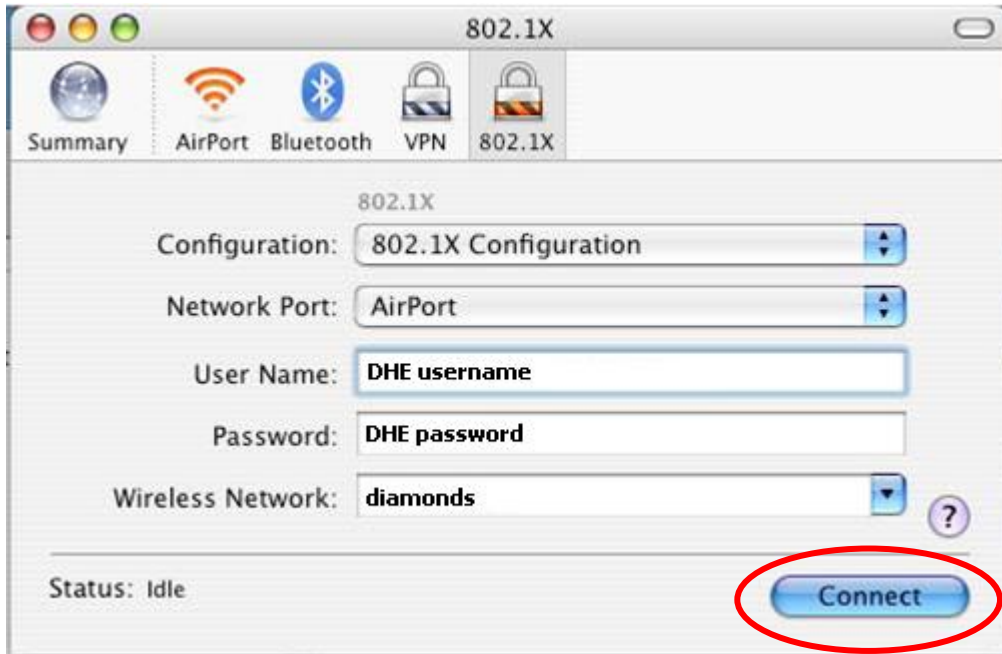


Click **OK**

Diamonds Wireless Configuration Guide - Mac OSX 10.4 (Tiger)

For support contact the DHTS Help Desk at 684-2243 or <https://www.dunk.duke.edu/secure/submit/>

10. Click **Connect**.



11. When you connect to the **DHE Enterprise Wireless** network, you will be prompted to accept a certificate. Click **Continue** to connect to the network.



Diamonds Wireless Configuration Guide - Mac OSX 10.4 (Tiger)

For support contact the DHTS Help Desk at 684-2243 or <https://www.dunk.duke.edu/secure/submit/>

12. Click the **Disconnect** button if you want to disconnect from the **DHE Enterprise Wireless** network.

