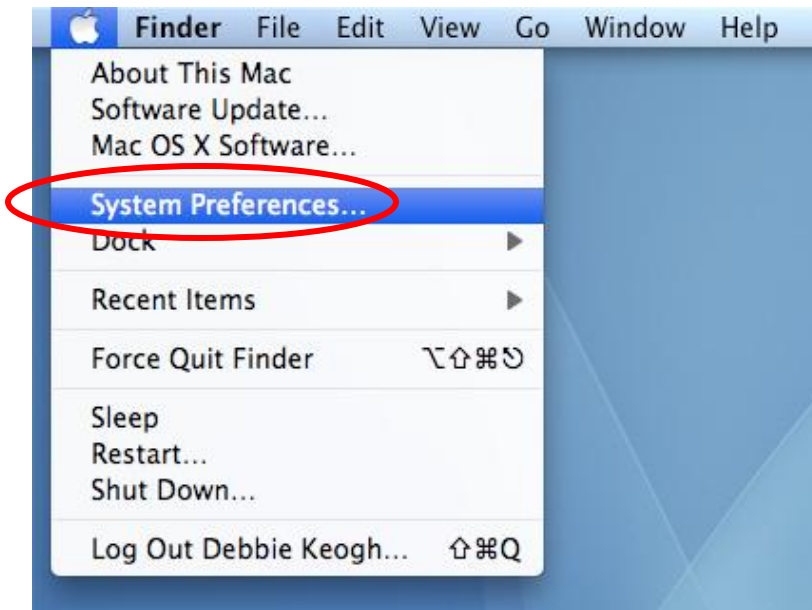
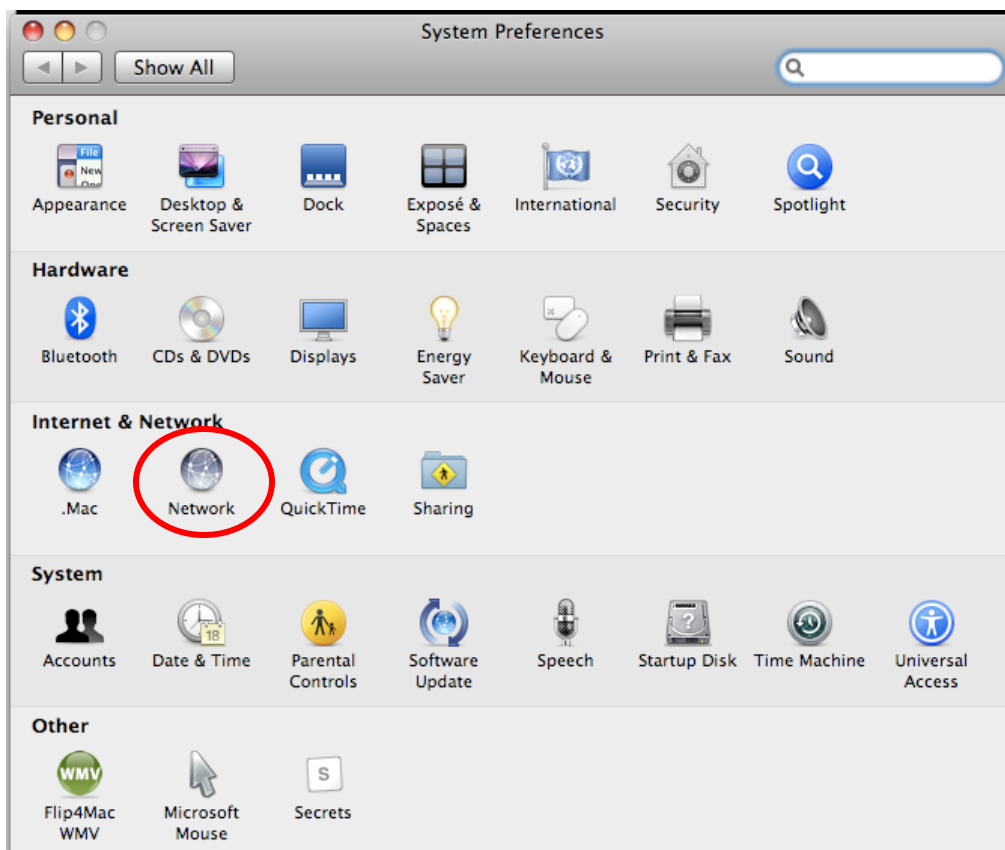


How to connect to the diamonds wireless network with Mac OSX 10.5

1. From the **Apple** menu select **System Preferences**



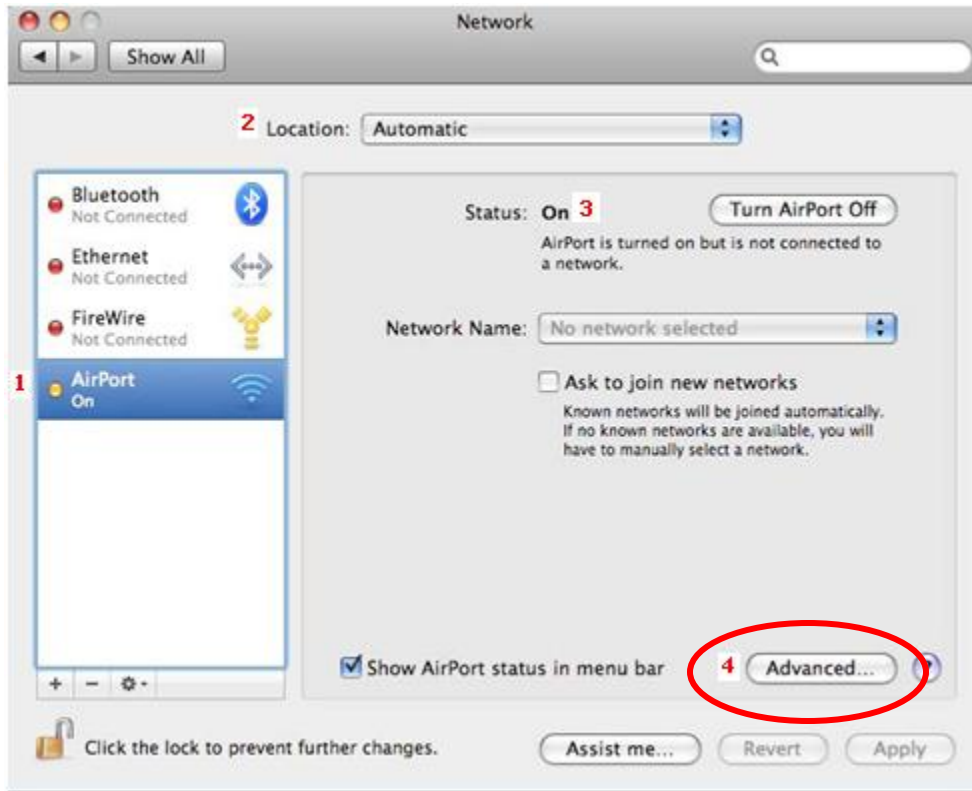
2. Click on the **Network** icon



Diamonds Wireless Configuration Guide - Mac OSX 10.5 (Leopard)

For support contact the DHTS Help Desk at 684-2243 or <https://www.dunk.duke.edu/secure/submit/>

3. On the **Network Preferences** window:
 1. Select **Airport** from the left hand side connection menu.
 2. Make sure that the **Location** is set to **Automatic**.
 3. Make sure the Airport is **On**.
 4. Click the **Advanced** button.



Diamonds Wireless Configuration Guide - Mac OSX 10.5 (Leopard)

For support contact the DHTS Help Desk at 684-2243 or <https://www.dunk.duke.edu/secure/submit/>

4. Configure the 802.1x settings.

1. Click on the **802.1X** tab
2. From the **Domain** drop-down menu select **User**.
3. Click the plus **+** button in the lower-left corner to create a new configuration.

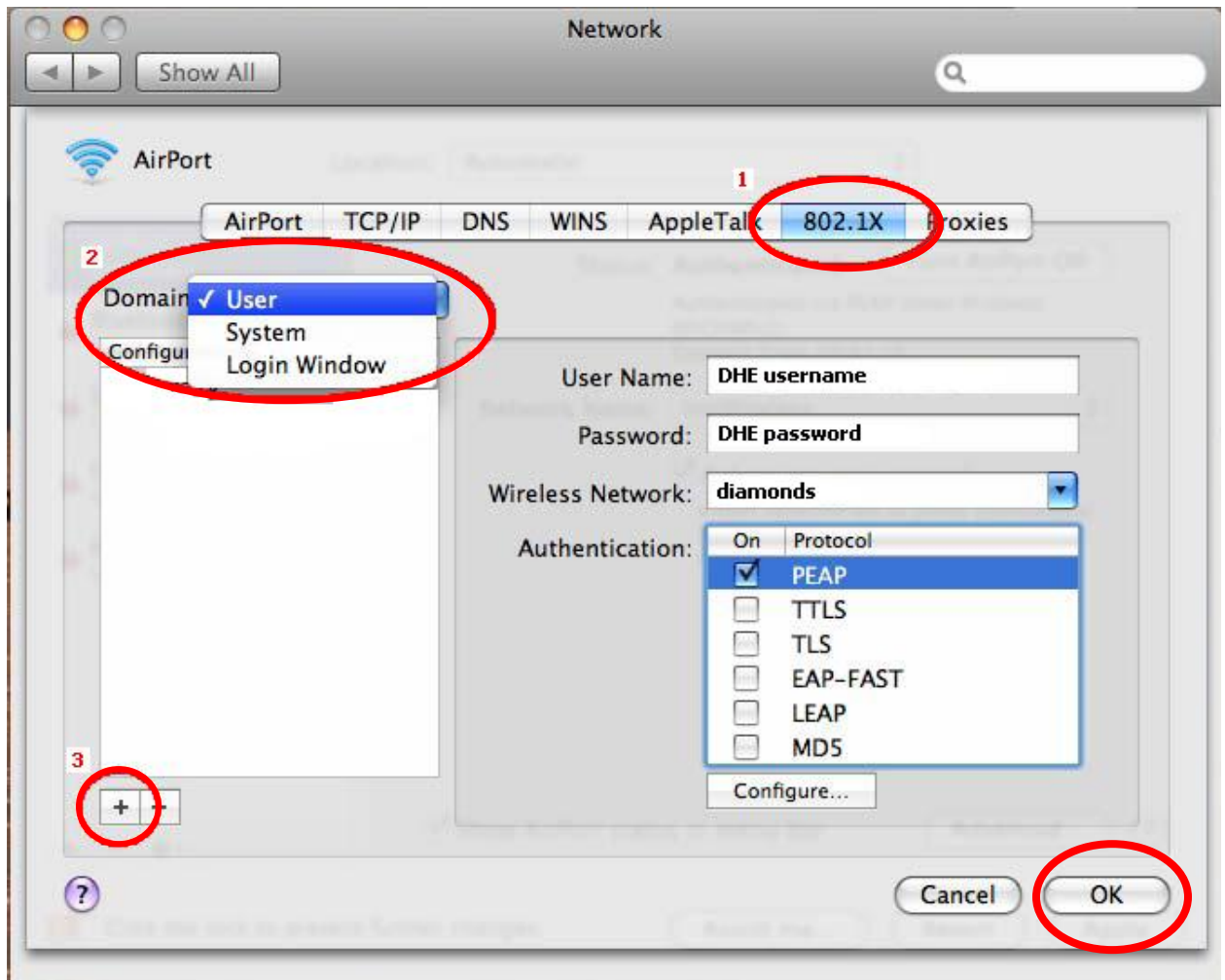
Use a meaningful name for the configuration such as DHE Wireless or Work.
Enter the following information:

User Name: **DHE username**

Password: **DHE password**

Select **diamonds** from the **Wireless Network** drop down box.

Authentication: **PEAP** (Make sure you only check PEAP in the Authentication list.)

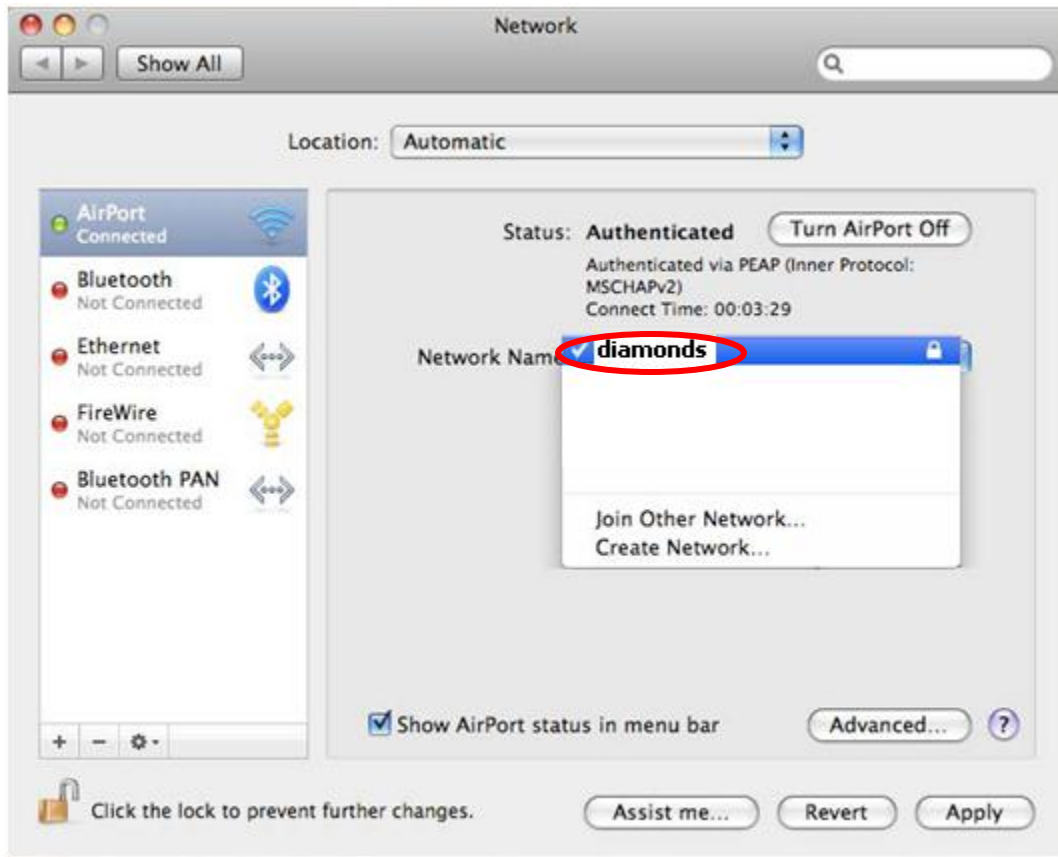


6. Click **OK**.

Diamonds Wireless Configuration Guide - Mac OSX 10.5 (Leopard)

For support contact the DHTS Help Desk at 684-2243 or <https://www.dunk.duke.edu/secure/submit/>

7. From the **Network Name** drop down box select **diamonds**.



8. A **Verify Certificate** box will appear and will ask you to verify the certificate. Click **Continue** to connect to the DHE Enterprise Wireless network.

