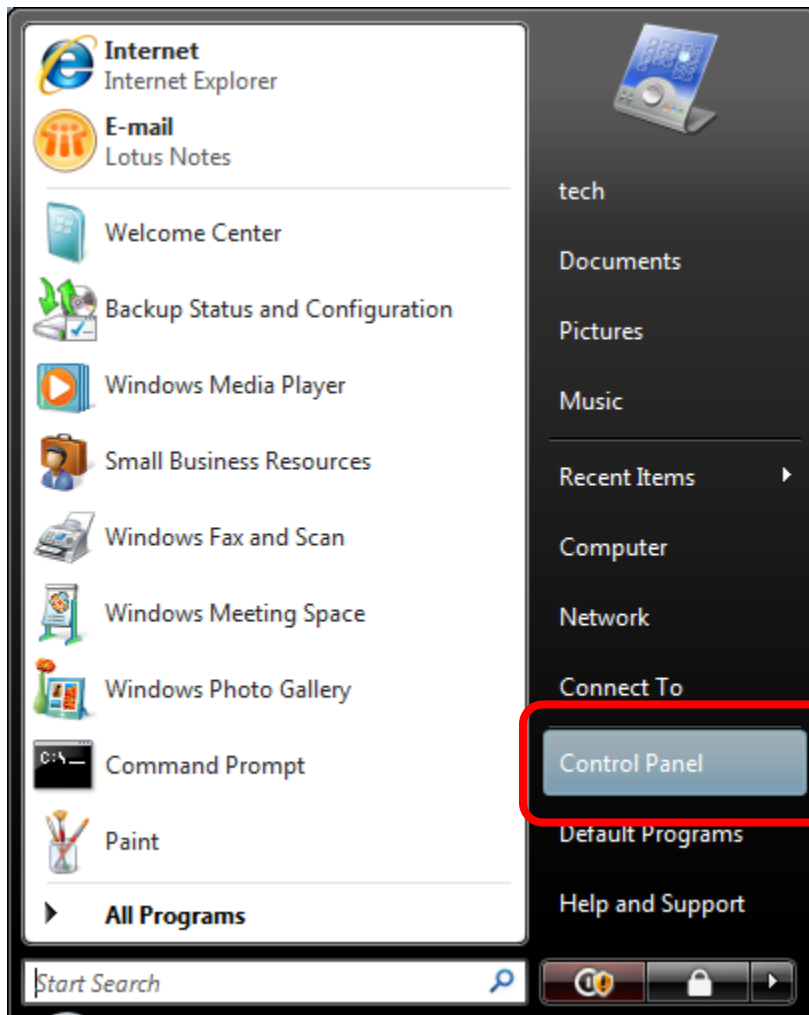


How to connect to the diamonds wireless network with Vista.

This configuration guide requires the use of Windows to configure the wireless settings.

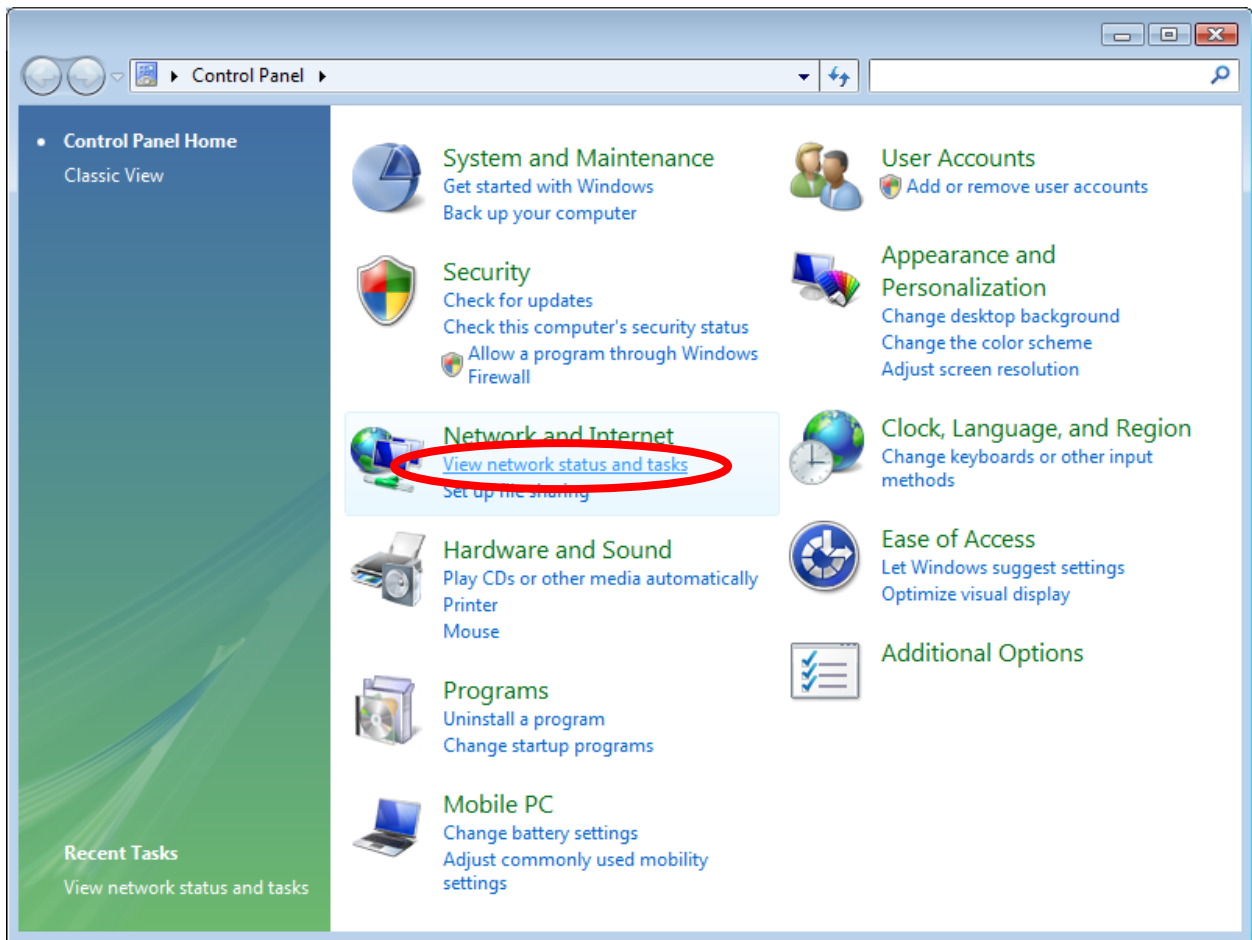
1. Click on the **START** menu and click the **Control Panel**.



Diamonds Wireless Network Configuration Guide - Vista

For support contact the DHTS Help Desk at 684-2243 or <https://www.dunk.duke.edu/secure/submit/>

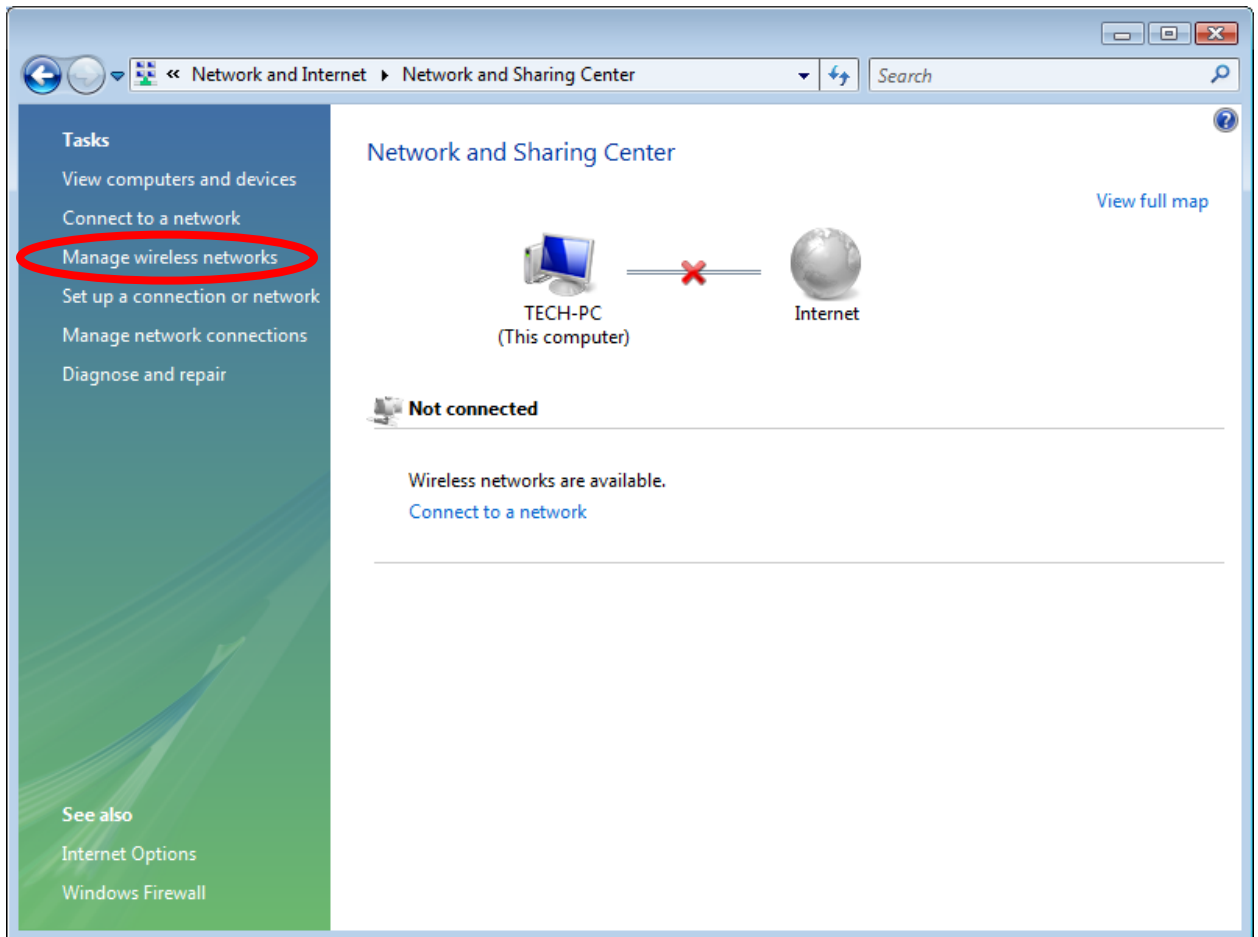
2. In the **Control Panel** window click **View network status and tasks** which is under **Network and Internet**.



Diamonds Wireless Network Configuration Guide - Vista

For support contact the DHTS Help Desk at 684-2243 or <https://www.dunk.duke.edu/secure/submit/>

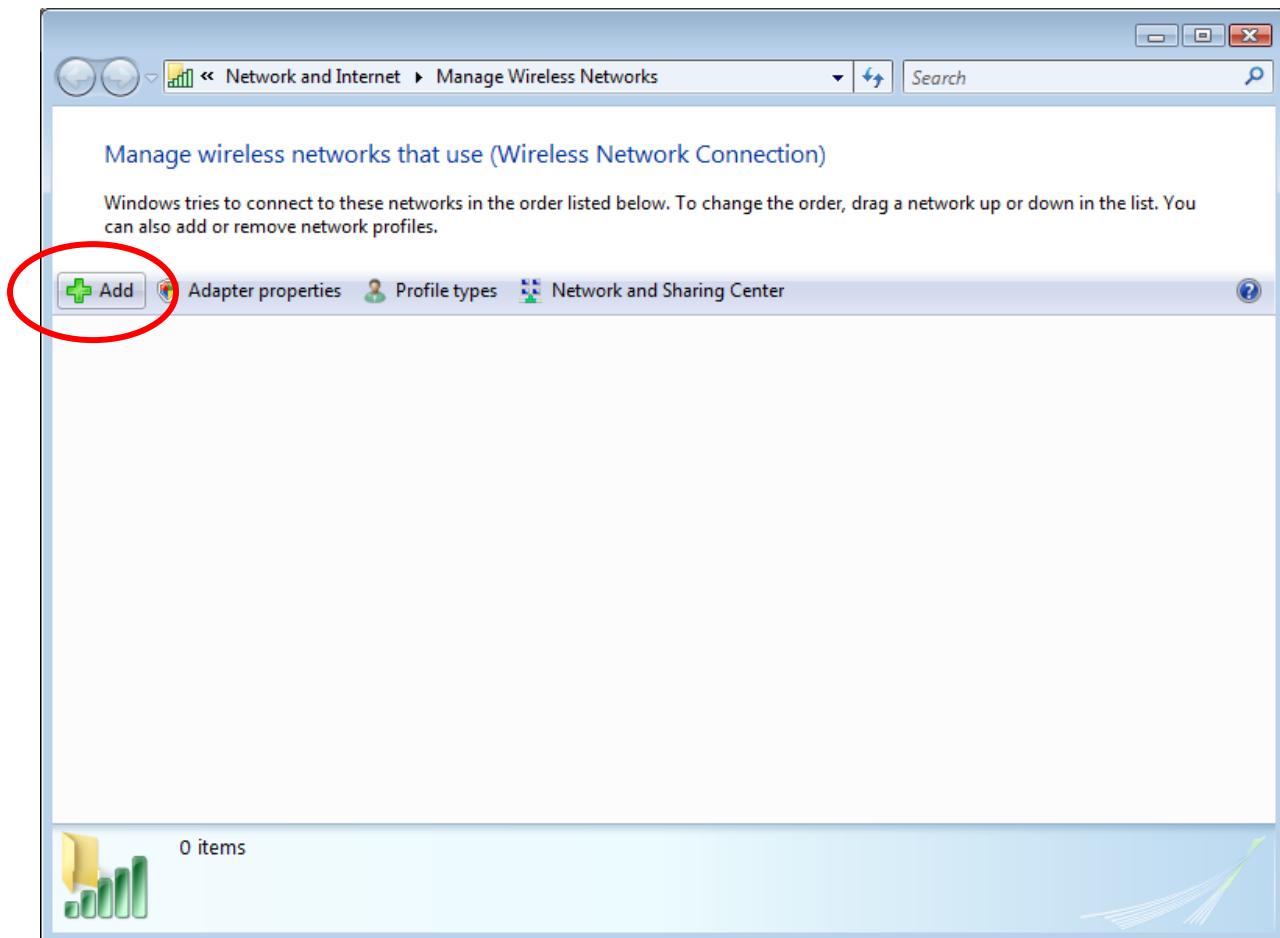
3. On the left hand side under **Tasks** click **Manage wireless networks**.



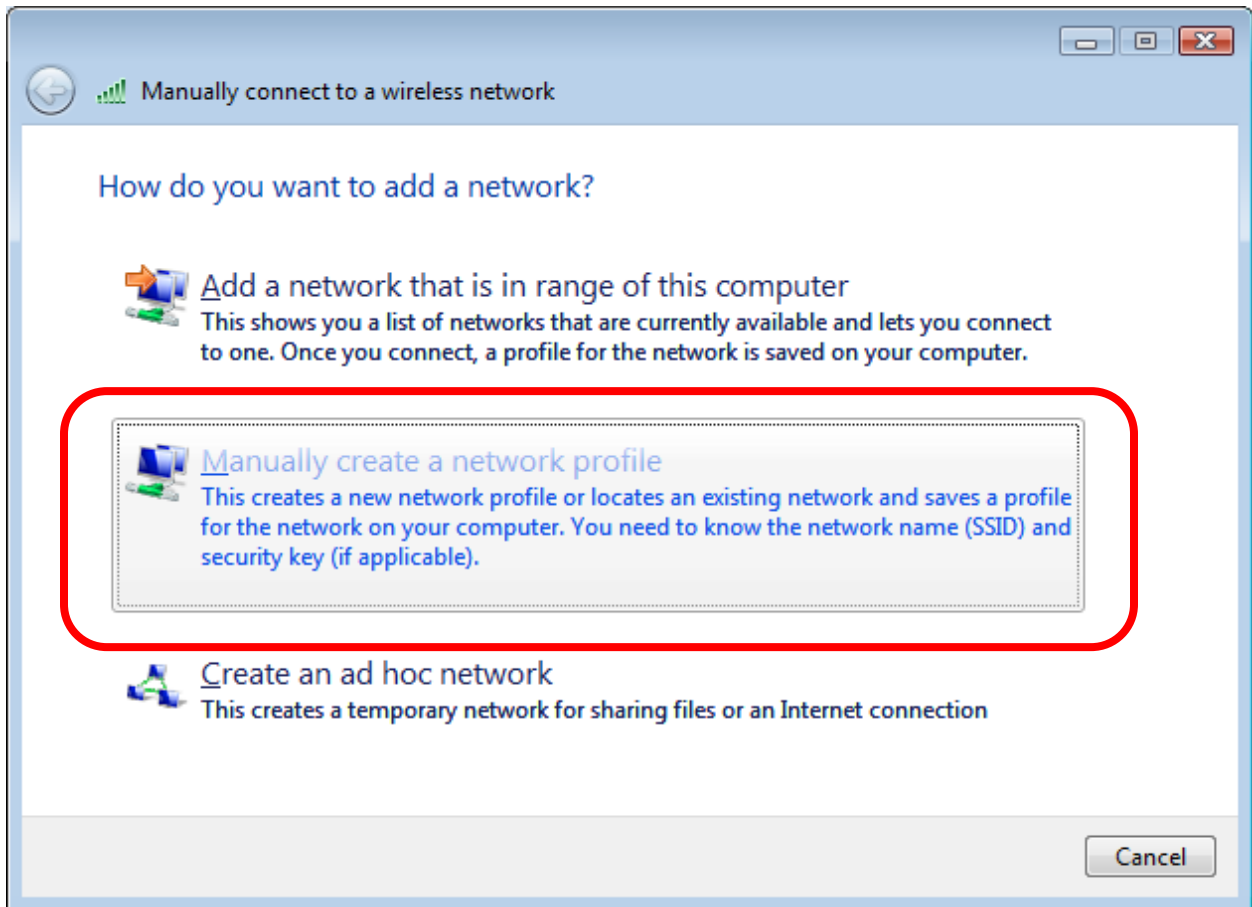
Diamonds Wireless Network Configuration Guide - Vista

For support contact the DHTS Help Desk at 684-2243 or <https://www.dunk.duke.edu/secure/submit/>

4. The Manage Wireless Networks will appear. From the left side of the window click **Add (+)**.



5. Select **Manually create a network profile**.



Diamonds Wireless Network Configuration Guide - Vista

For support contact the DHTS Help Desk at 684-2243 or <https://www.dunk.duke.edu/secure/submit/>

- Enter or select the following information in the appropriate boxes.
 - Network name:** **diamonds**
 - Security type:** **WPA-Enterprise**
 - Encryption type:** **TKIP**
- Check the box next to **start this connection automatically** and then click **Next**.

Manually connect to a wireless network

Enter information for the wireless network you want to add

Network name:

Security type:

Encryption type:

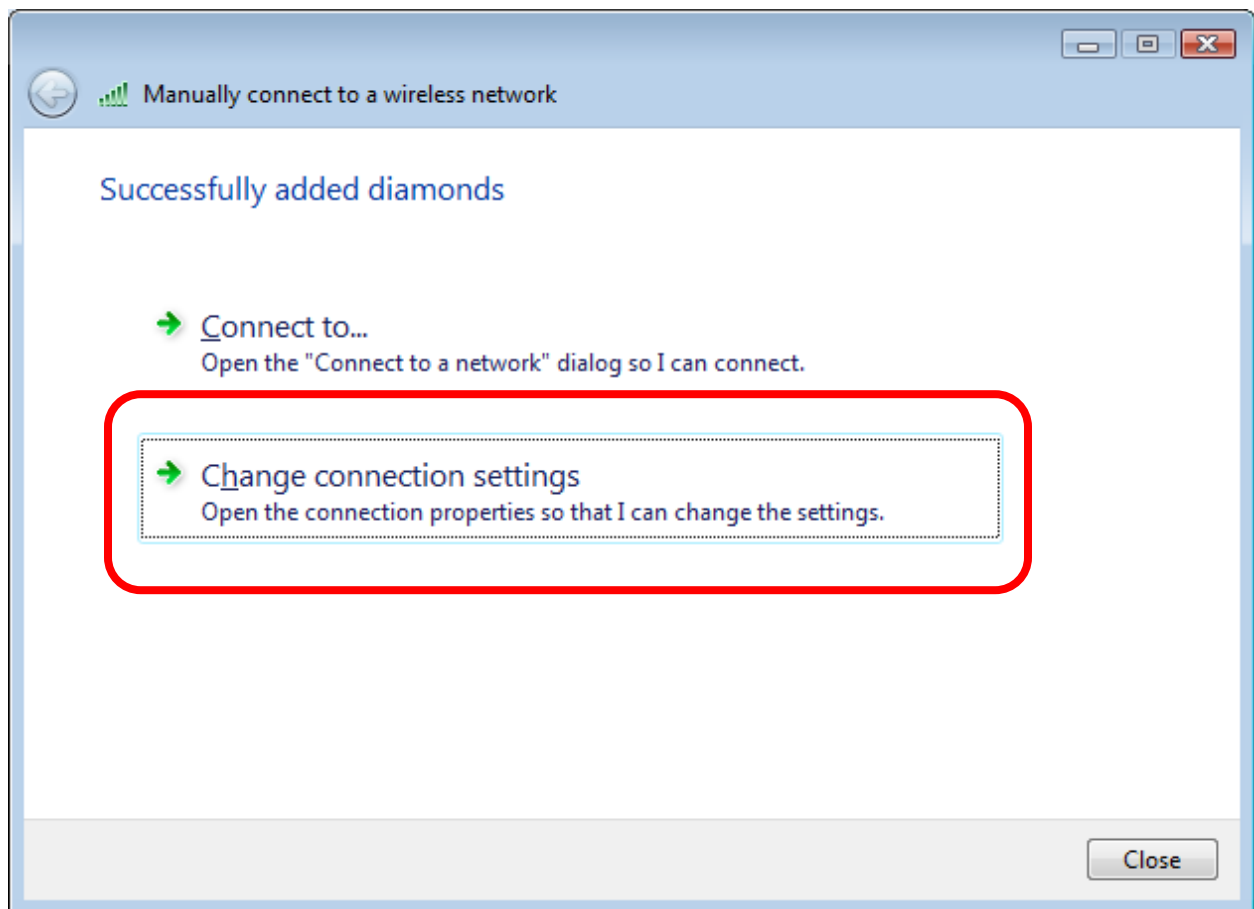
Security Key/Passphrase: Display characters

Start this connection automatically

Connect even if the network is not broadcasting

Warning: If you select this option, your computer's privacy might be at risk.

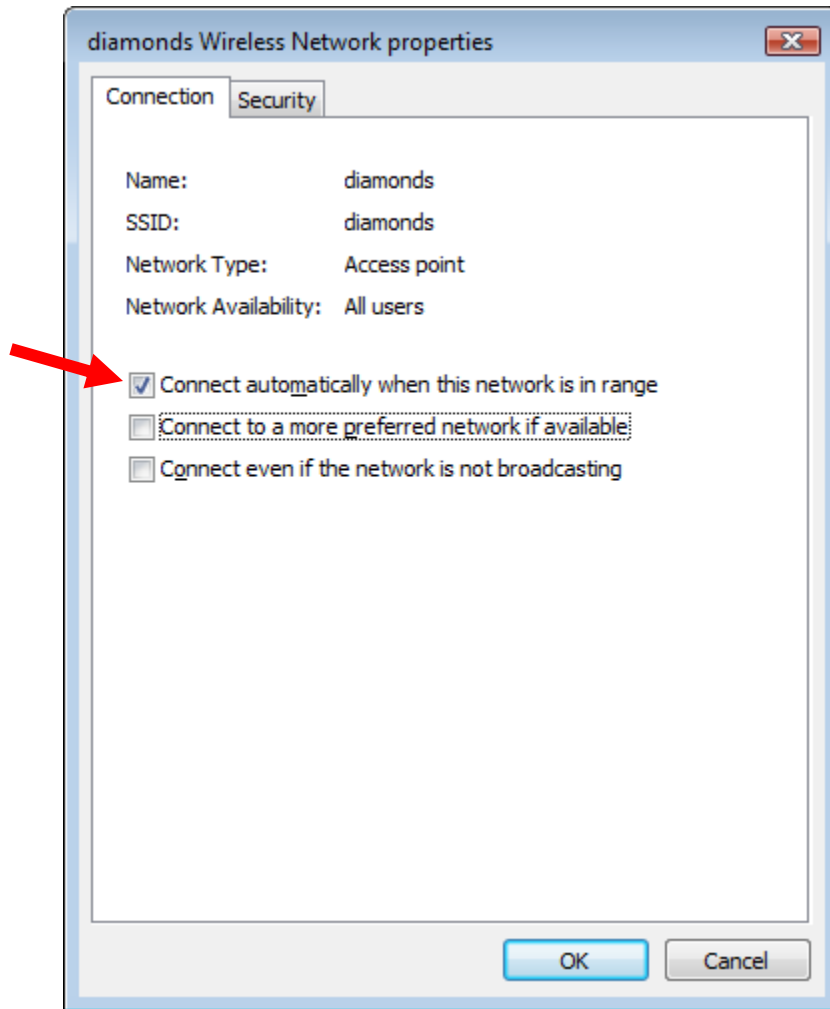
8. This window indicates that the **diamonds** SSID has been successfully added. Click **Change connection settings** to configure the Wireless connection properties.



Diamonds Wireless Network Configuration Guide - Vista

For support contact the DHTS Help Desk at 684-2243 or <https://www.dunk.duke.edu/secure/submit/>

9. Check the box next to **Connect automatically when this network is in range.**

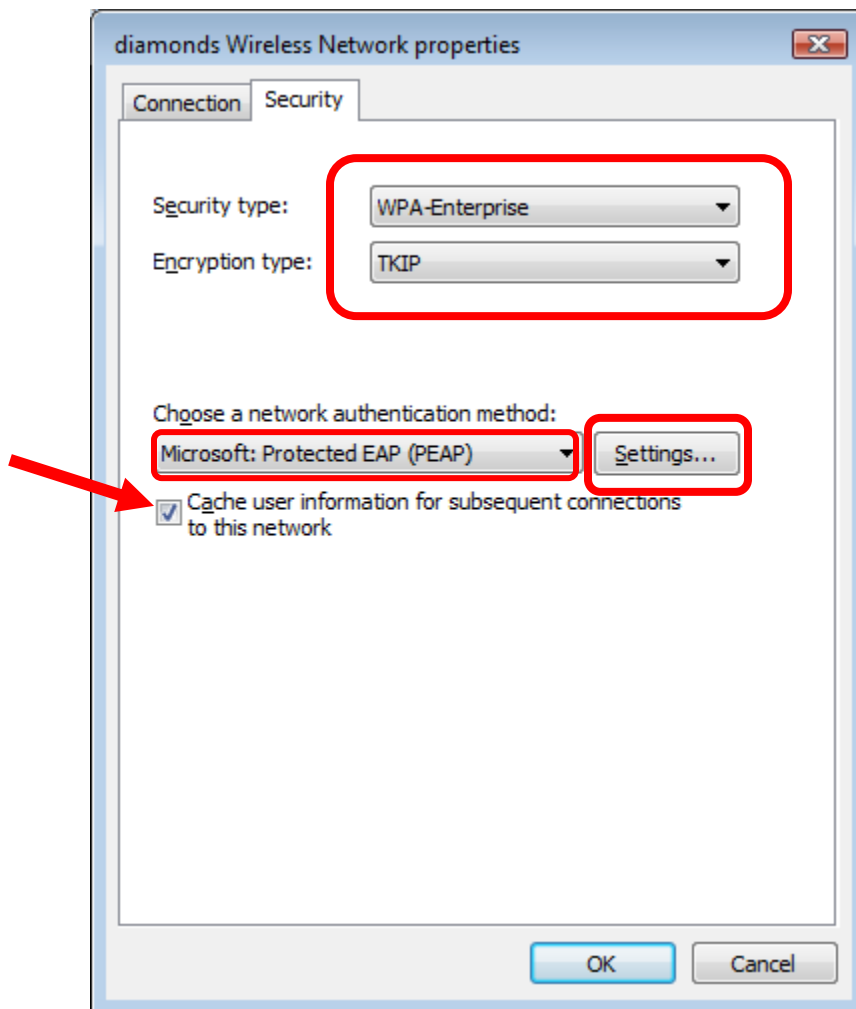


Diamonds Wireless Network Configuration Guide - Vista

For support contact the DHTS Help Desk at 684-2243 or <https://www.dunk.duke.edu/secure/submit/>

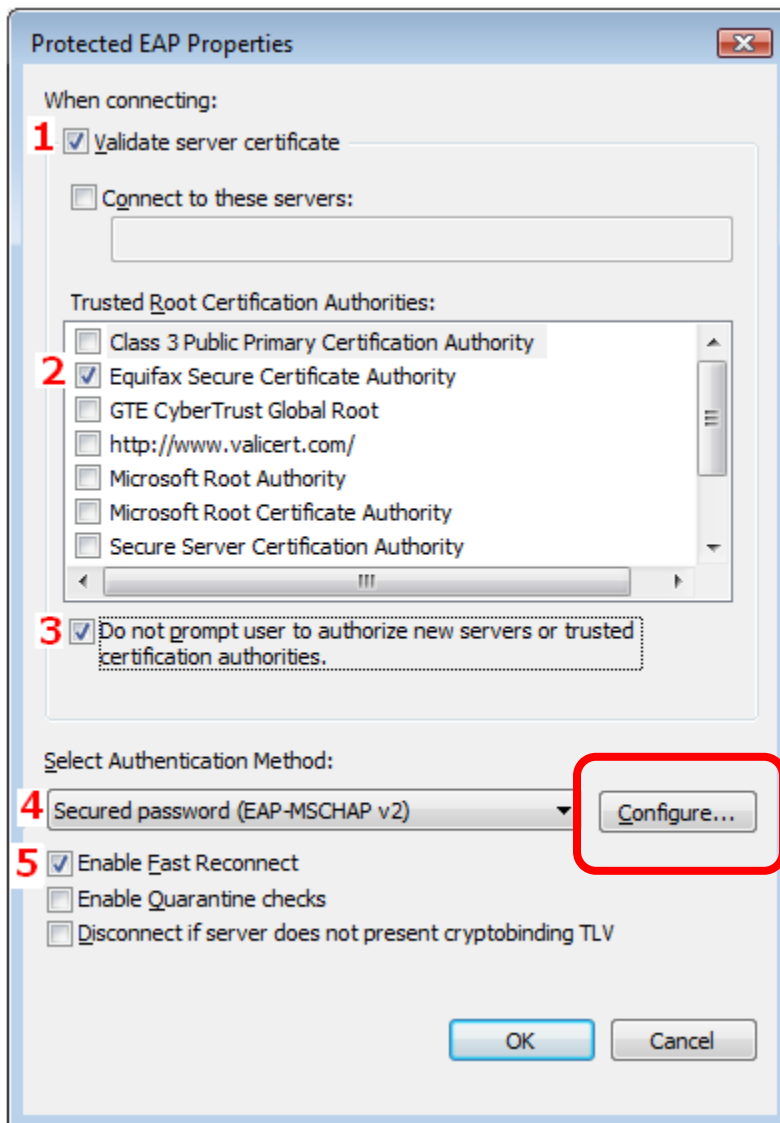
10. Click the **Security** tab to configure the security settings for the diamonds wireless network.

- **Security Type: WPA-Enterprise**
- **Encryption type: TKIP**
- **Choose a network authentication method: Microsoft: Protected EAP (PEAP)**
- Check the box beside **Cache user information for subsequent connections to this network.**
- Click **Settings.**



11. In the **Protected EAP Properties** window make sure that the following boxes are checked.

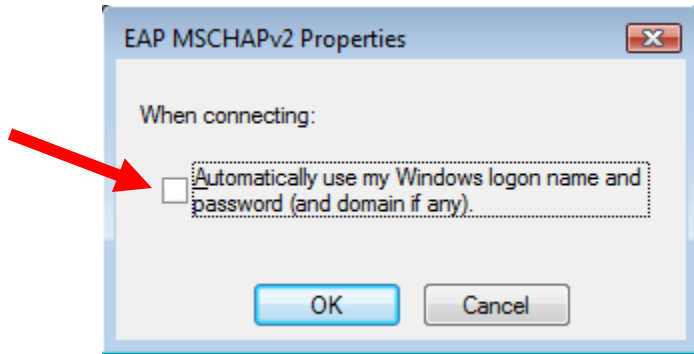
1. **Validate server certificate**
2. **Trusted Root Certification Authorities:** Find and check **Equifax Secure Certificate Authority**.
3. **Do not prompt user to authorize new servers or trusted certification authorities.**
4. **Select Authentication Method** drop down box, select **Secured password (EAP-MSCHAP v2)**.
5. **Enable Fast Reconnect.**
6. **Click Configure**



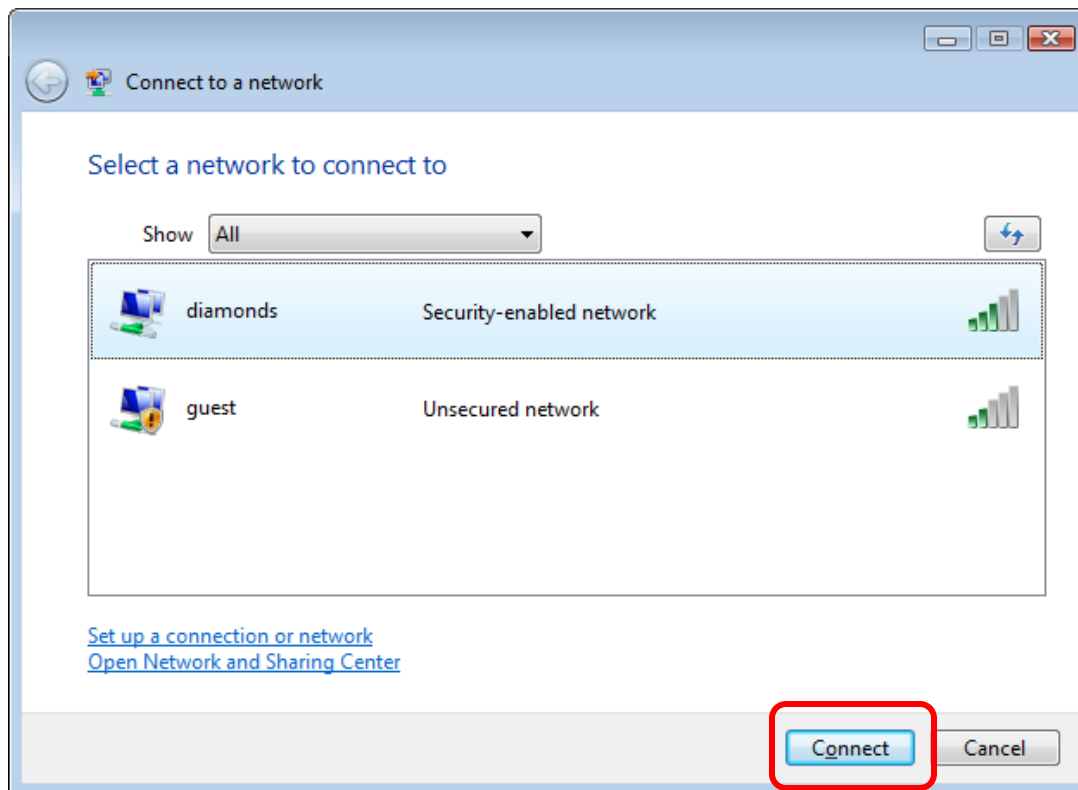
Diamonds Wireless Network Configuration Guide - Vista

For support contact the DHTS Help Desk at 684-2243 or <https://www.dunk.duke.edu/secure/submit/>

12. Clicking **Configure** which is located to the right of the **Select Authentication Method** drop down box in the previous screenshot will open the box for EAP MSCHAPv2 Properties. Do not check the box next to **Automatically use my Windows logon name and password (and domain if any)**.



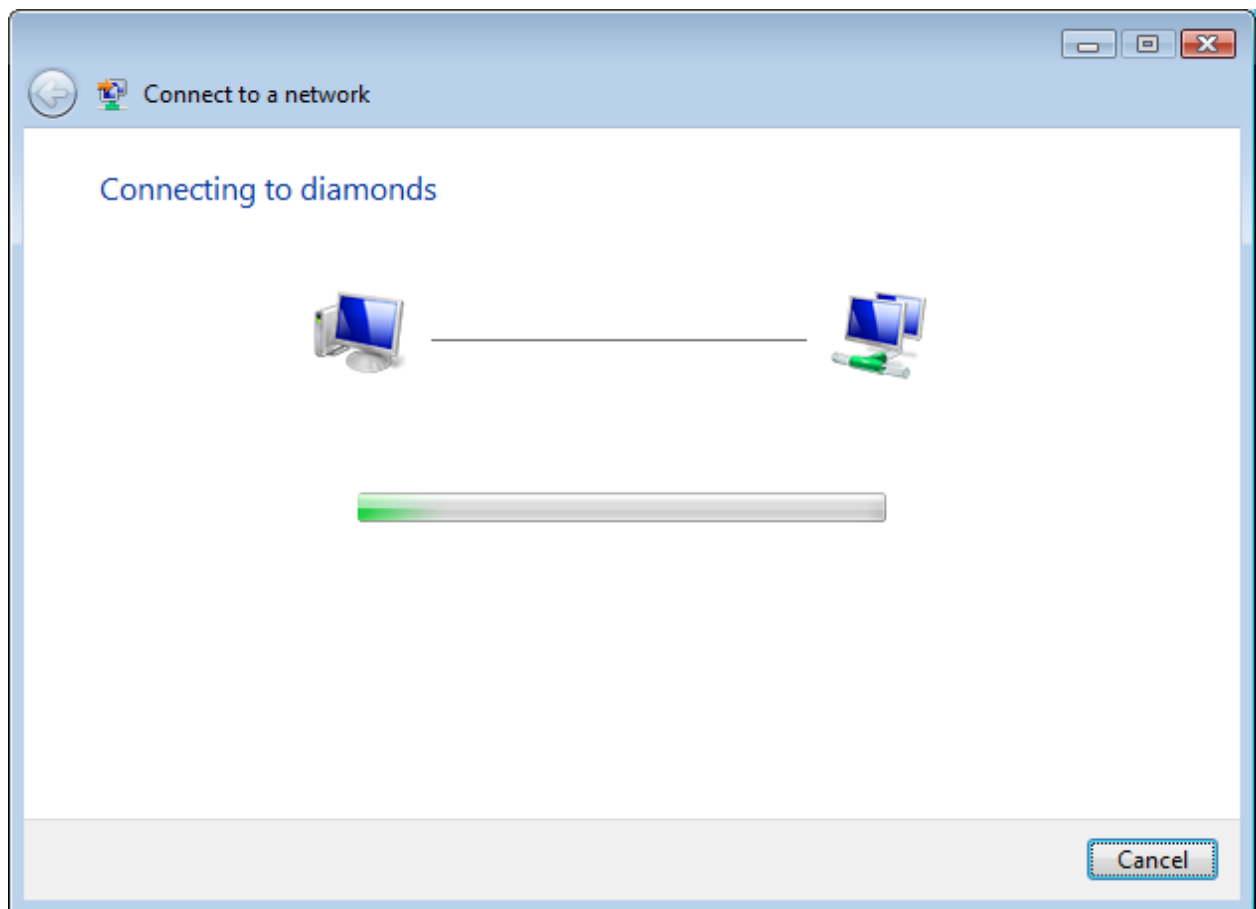
13. Click **OK** to close all the open boxes and click **Close** to
14. Click **OK** again
15. Click **OK**.
16. Make sure diamonds is still highlighted and then click the **Connect** button.



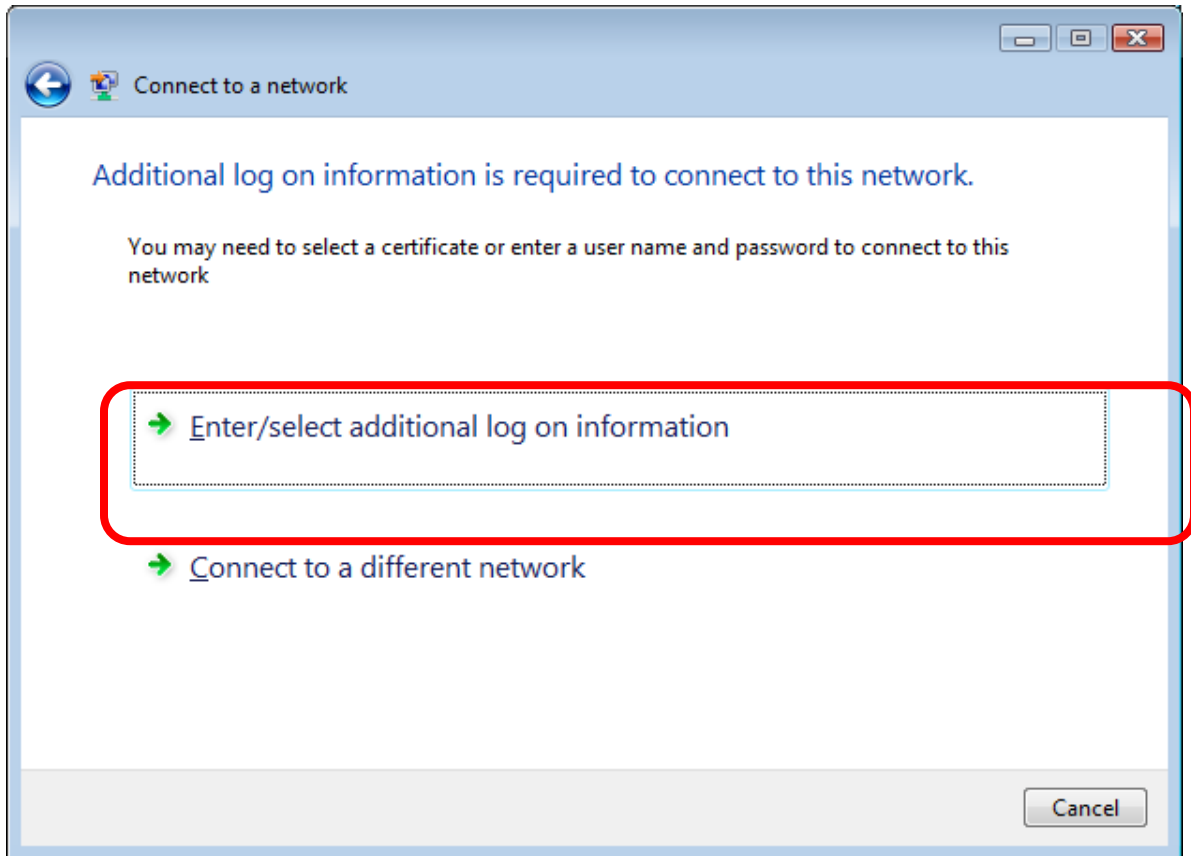
Diamonds Wireless Network Configuration Guide - Vista

For support contact the DHTS Help Desk at 684-2243 or <https://www.dunk.duke.edu/secure/submit/>

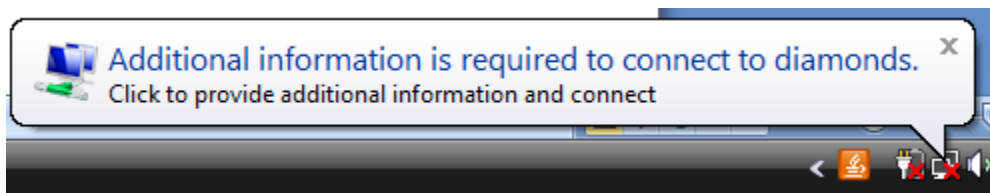
17. You should see this window after clicking connect indicating an attempt to connect to the diamonds wireless network.



18. The window below will appear prompting you to enter additional credentials to connect to the **diamonds** wireless network. Click **Enter/select additional log on information** to see the **Enter Credentials** popup box. Instead of seeing this you may see the balloon in step #19.



19. If you see this balloon pop up in the lower right of the screen click it to enter your DHE Active Directory username and password in the **Enter Credentials** popup box.



Diamonds Wireless Network Configuration Guide - Vista

For support contact the DHTS Help Desk at 684-2243 or <https://www.dunk.duke.edu/secure/submit/>

20. In the **Enter Credentials** popup enter your DHE Active Directory credentials.

User name: DHE user name

Password: DHE password

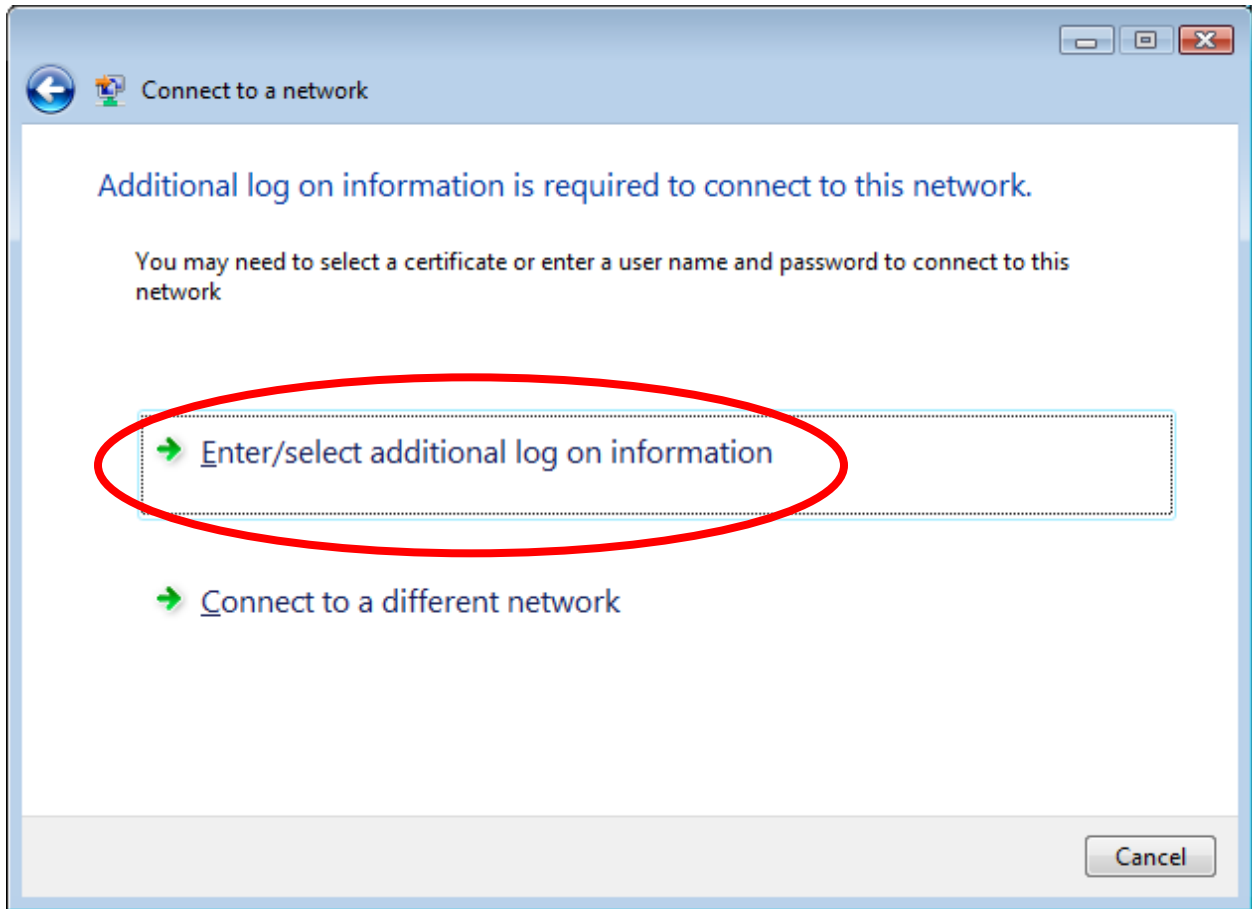
Logon domain: DHE



Diamonds Wireless Network Configuration Guide - Vista

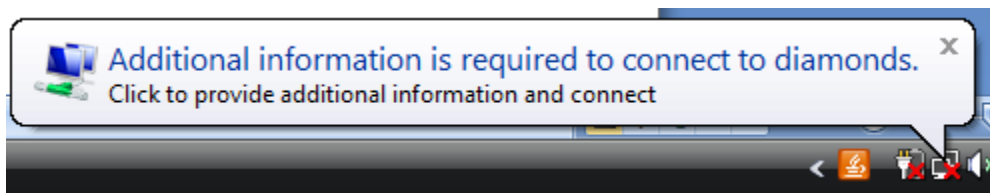
For support contact the DHTS Help Desk at 684-2243 or <https://www.dunk.duke.edu/secure/submit/>

21. You will need to validate the server certificate before connecting to **diamonds**. You should see one of the two screenshots which is dependent on your computer setup.
22. If you see this window click **Enter/select additional log on information** to validate the server certificate.



Or

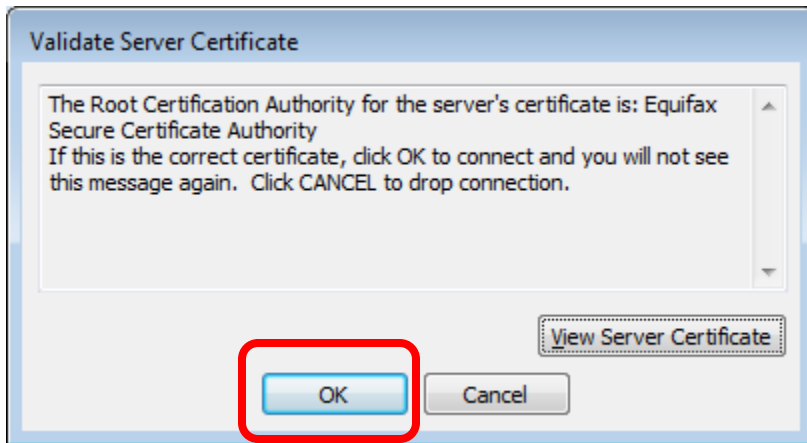
23. If you see this balloon popup at the bottom of your screen click it to validate the server certificate.



Diamonds Wireless Network Configuration Guide - Vista

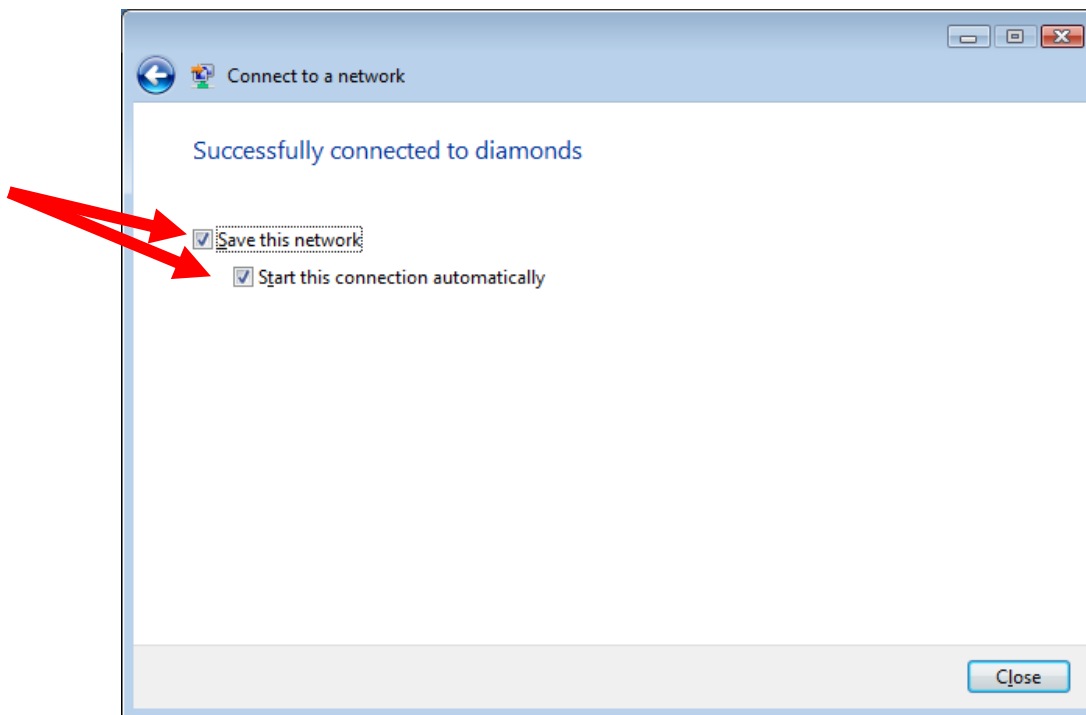
For support contact the DHTS Help Desk at 684-2243 or <https://www.dunk.duke.edu/secure/submit/>

24. Select **OK** to validate the Server Certificate.



25. Check the following boxes.

- **Save this network**
- **Start this connection automatically**



27. You should now be successfully connected to the **diamonds** wireless network.