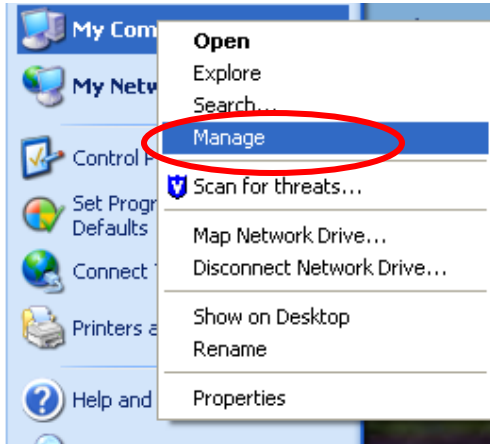
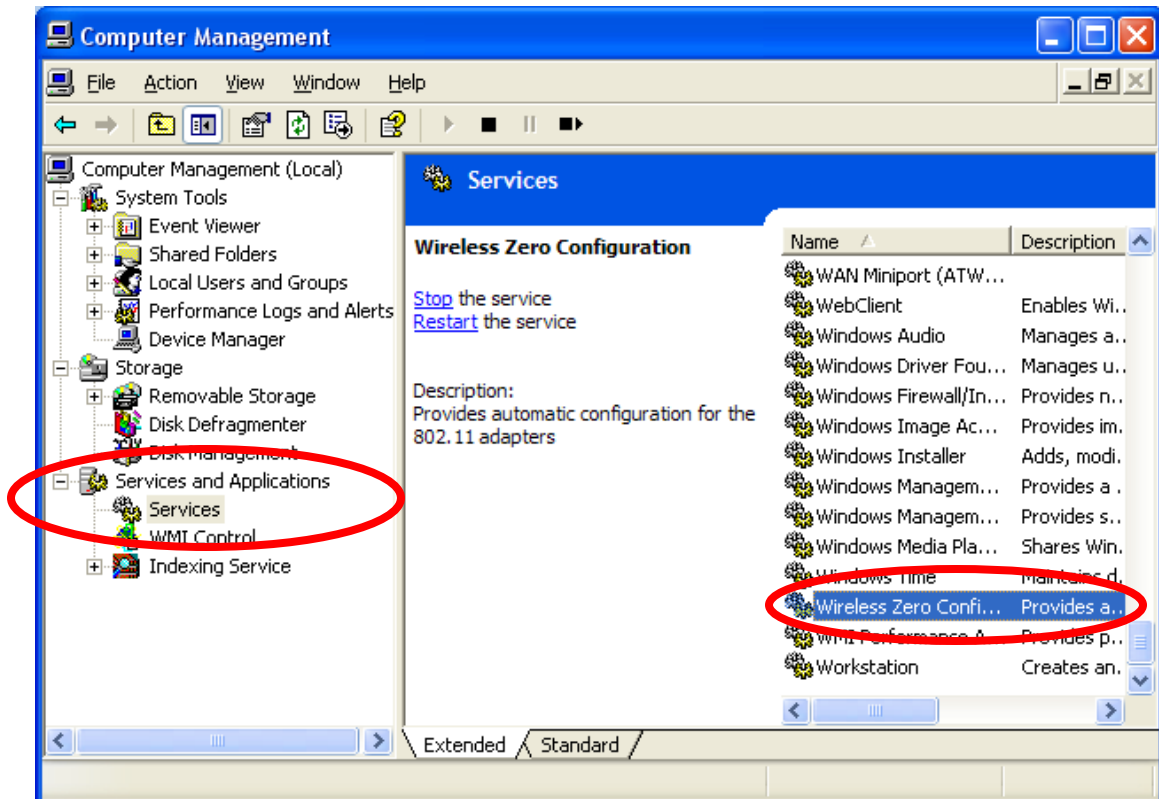


This configuration guide requires the use of the Windows Wireless Zero Configuration (WZC) to configure the wireless settings. If you are confident that you are currently using Windows to configure your wireless setting and not a third party supplicant you can skip to step #4.

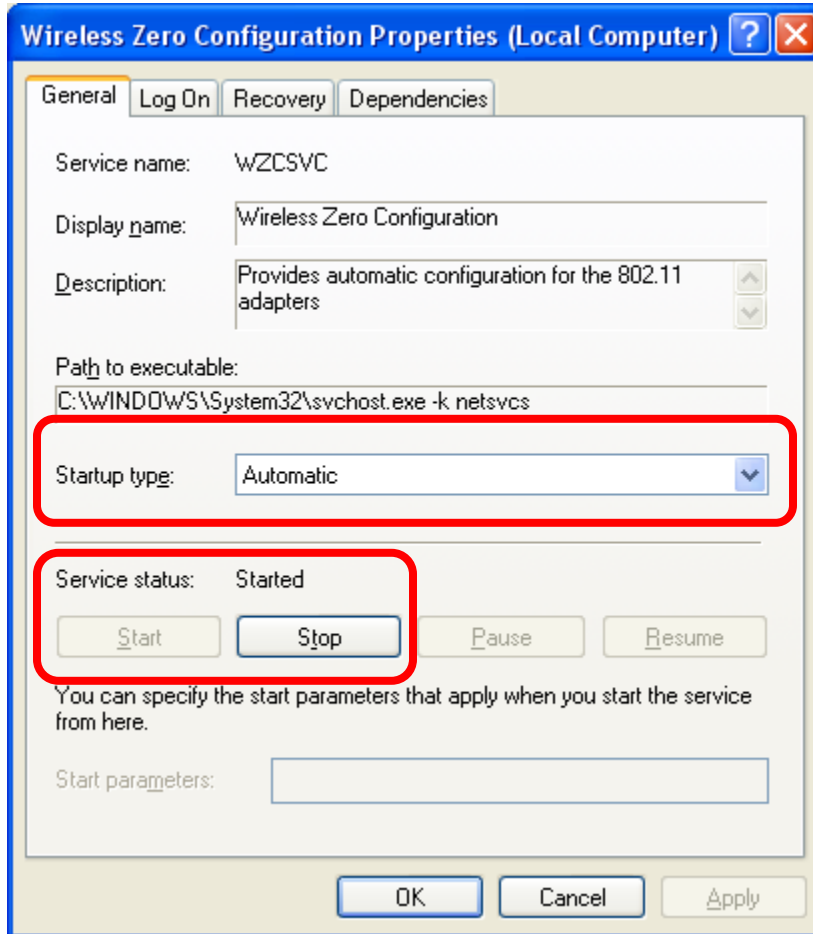
1. Right click on **My Computer** and select **Manage**.



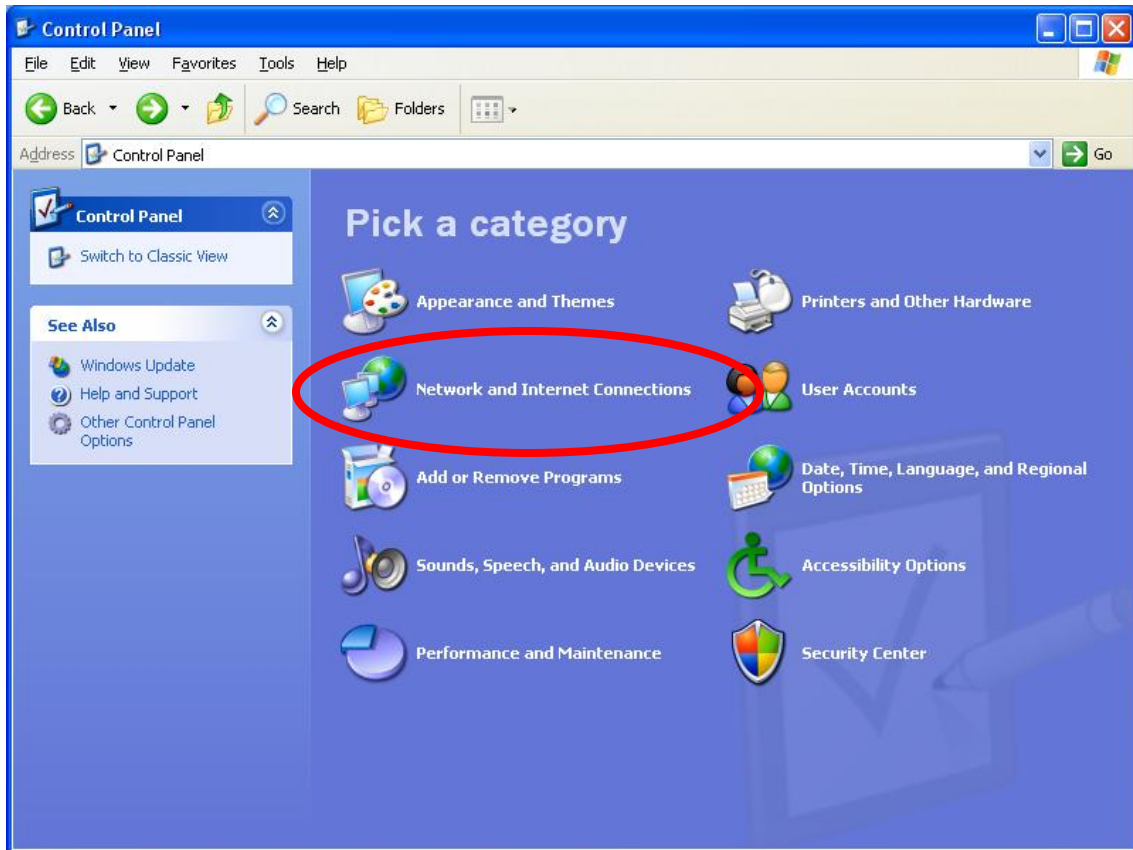
2. In the **Computer Management** Window
  - Expand **Services and Applications** by clicking the ( + ) sign and then click **Services**.
  - On the right side find **Wireless Zero Configuration** in the list of Services; right click on WZC and select **Properties**.



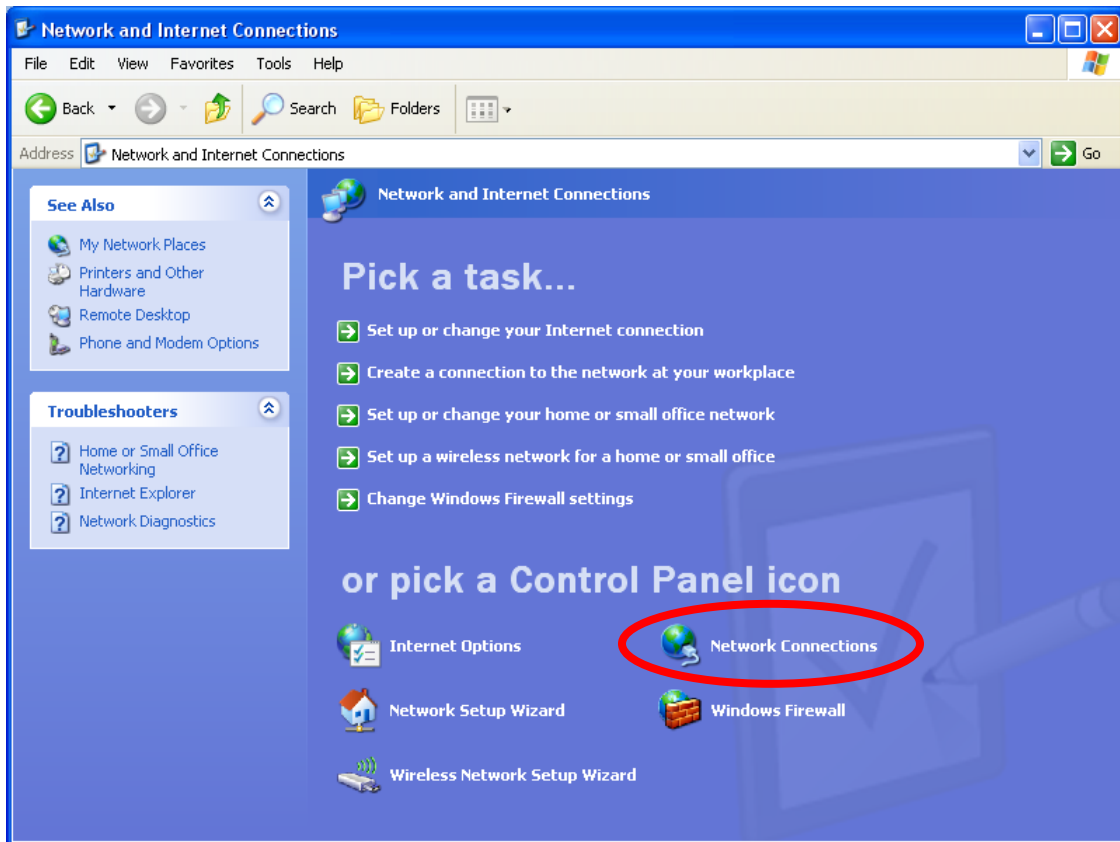
3. The **Wireless Zero Configuration Properties** window will appear.
  - Ensure that the **Service Status** is set to **Started**. If it is not set to start, then click **Start**.
  - Make sure the **Startup type** is set to **Automatic**.
  - Click **Ok** to close this window then close the **Computer Management** window.



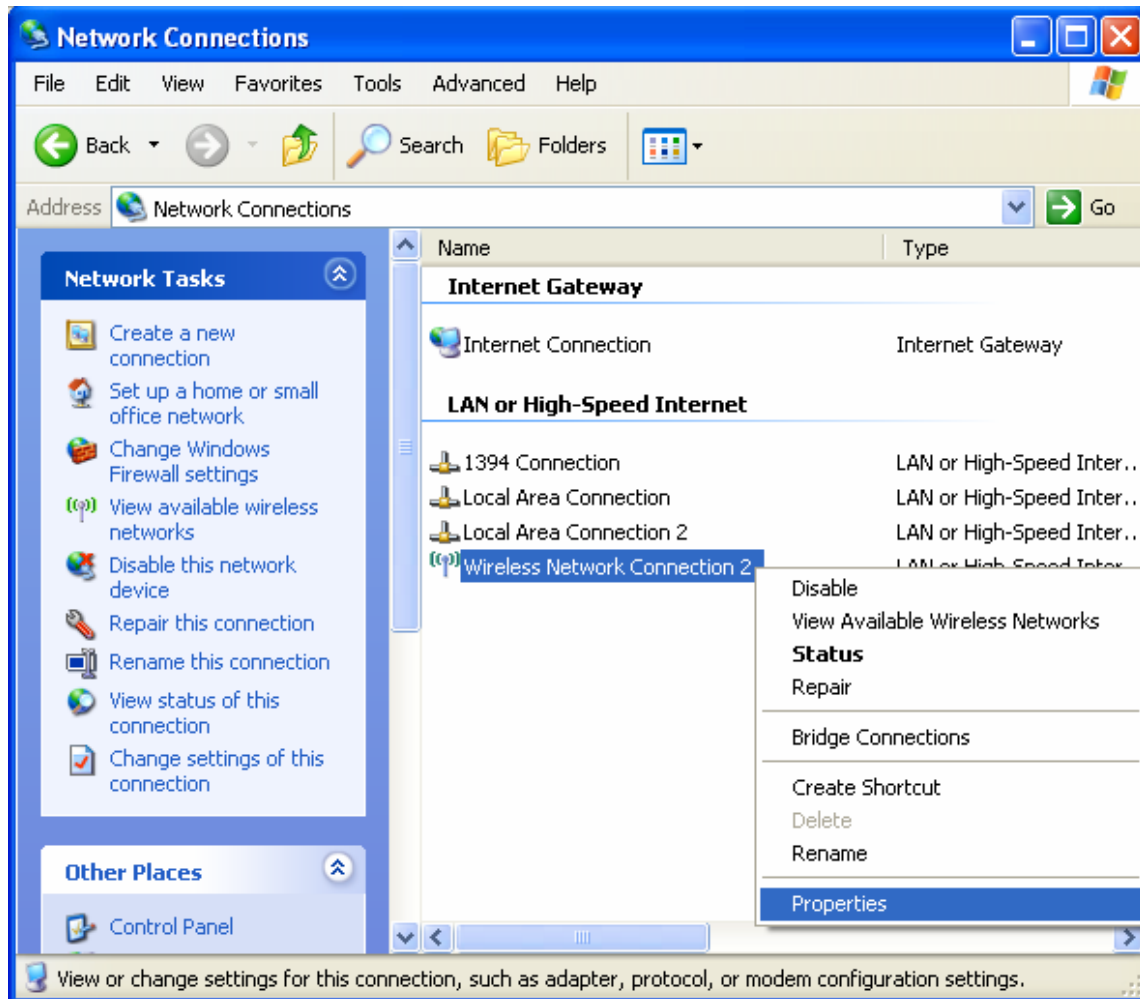
4. Click **Start** → **Control Panel** → **Network and Internet Connections**.



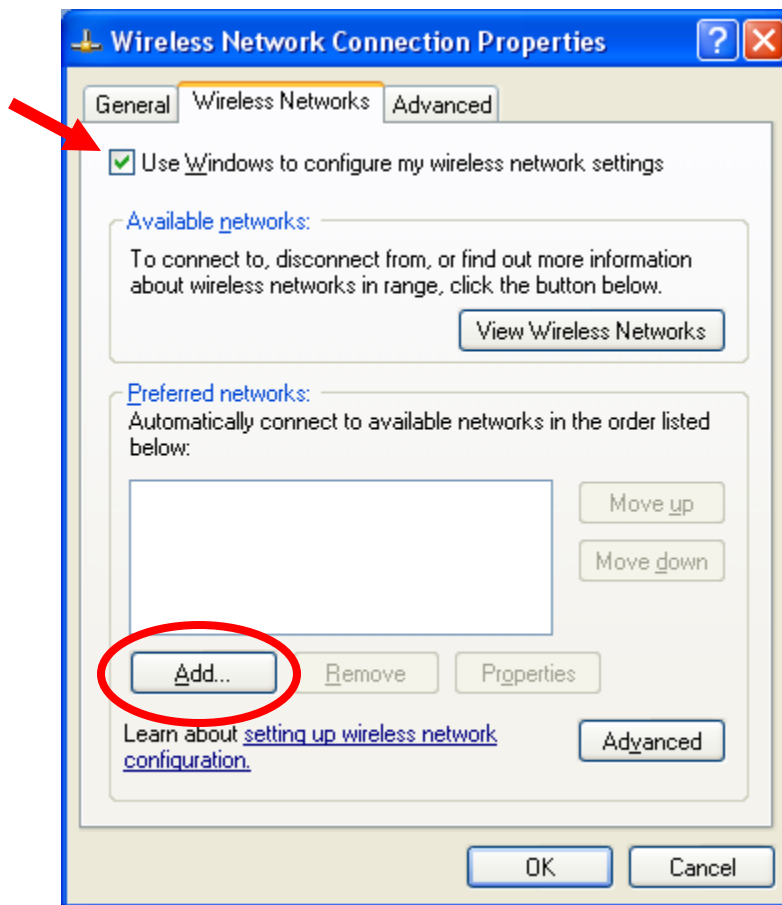
5. Select **Network Connections**.



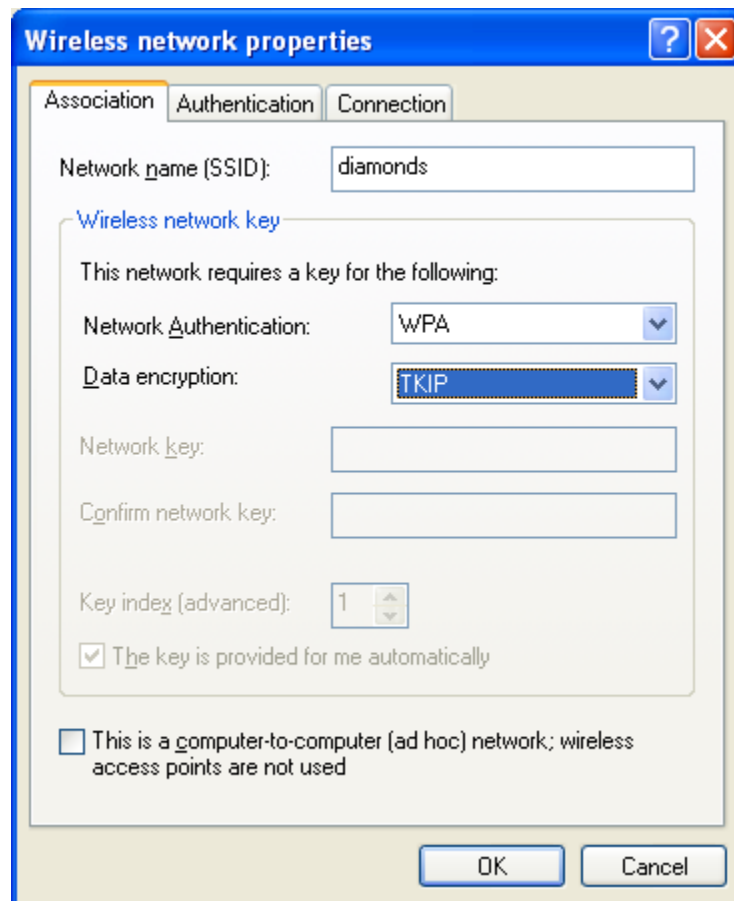
6. Right Click on Wireless Network Connection and select **Properties**.



7. Make sure that the **Use Windows to configure my wireless network setting** is checked and then click the **Add** button below **Preferred Networks**.

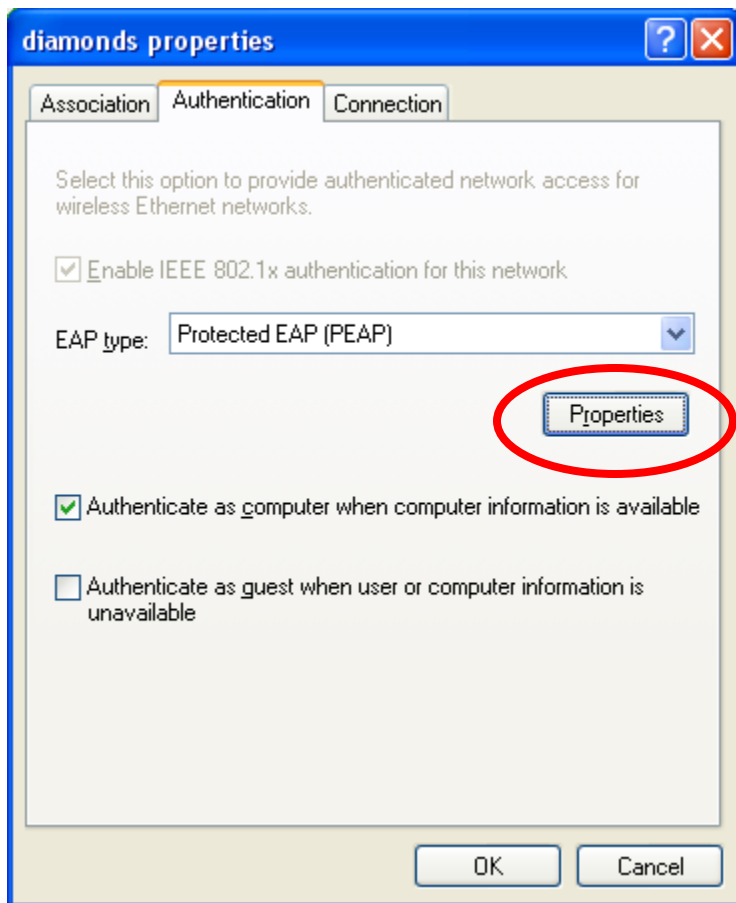


8. In the Wireless network properties window enter the following settings in the appropriate box.
  - **Network name (SSID): diamonds**
  - **Network Authentication: WPA**
  - **Data encryption: TKIP**
  - Make sure that **This is a computer-to-computer (ad hoc) network** is **NOT** selected.



9. Click the Authentication tab to configure the requires authentication settings.
  - In the **EAP type** drop down box select **Protected EAP (PEAP)**.
  - Check **Authenticate as computer when computer information is available**.
  - Do not check **Authenticate as guest when user or computer information is available**.

Click **Properties** under **EAP type**.

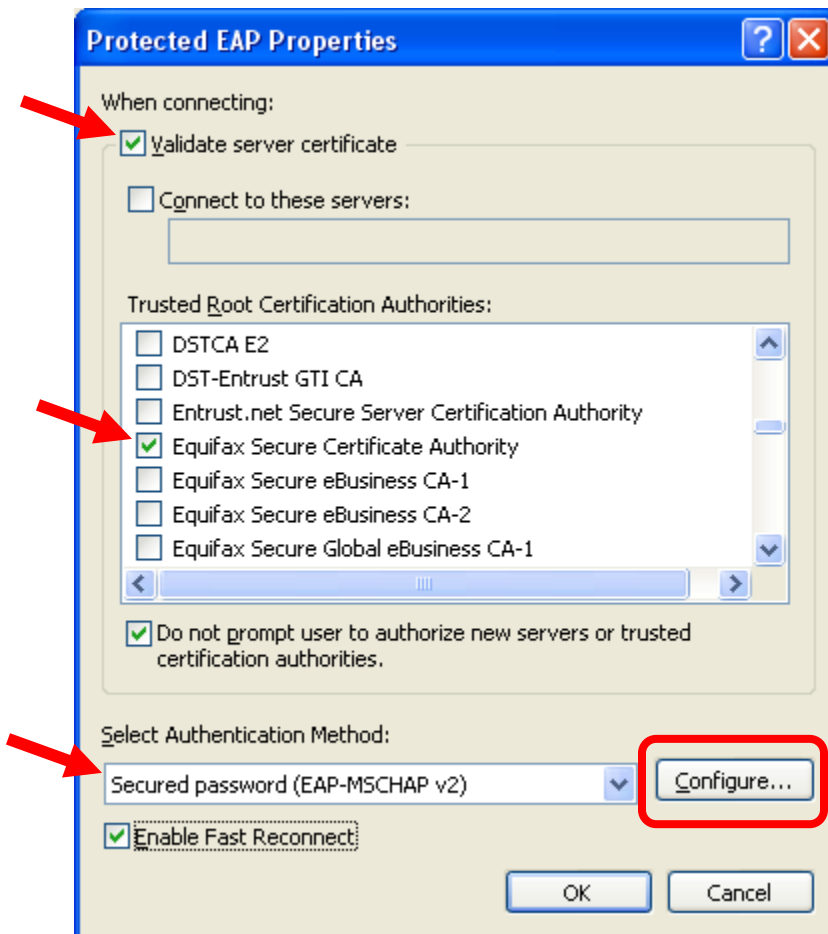




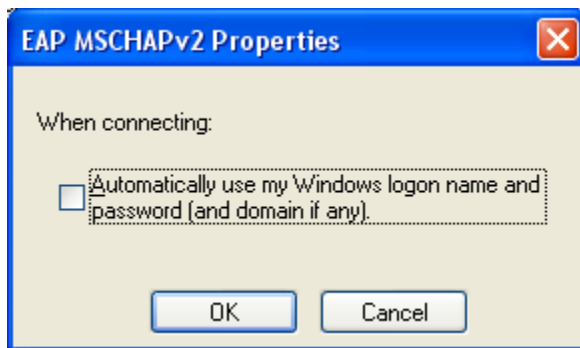
10. Configure the **Protected EAP (PEAP) Properties** settings.

- Check **Validate server certificate**.
- In the **Trusted Root Certification Authorities** list select **Equifax Secure Certificate Authority**.
- Check the **Do not prompt user to authorize new servers or trusted certification authorities**.
- Under **Select Authentication Method** select **Secured password (EAP-MSCHAP v2)**.
- Check **Enable Fast Reconnect**.

Click **Configure** to configure the EAP-MSCHAP v2 properties.

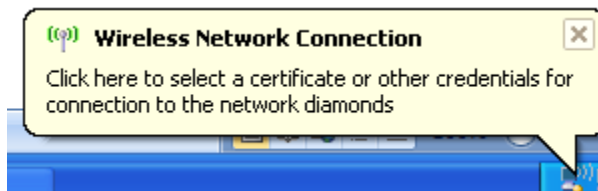


11. Do not check the **Automatically use my Windows logon name and password** box



12. Click **OK** to close all the boxes.

13. After a few second a balloon will appear prompting you enter additional credentials.  
Click the balloon and the **Enter Credentials** popup box will appear.

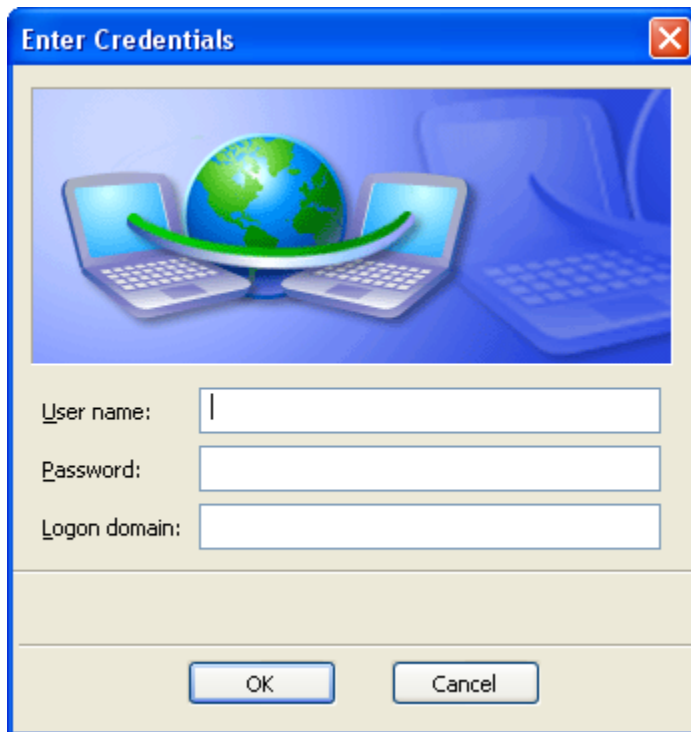


## DHE Enterprise Wireless Configuration Guide: Windows XP

For support contact the DHTS Help Desk at 684-2243 or <https://www.dunk.duke.edu/secure/submit/>

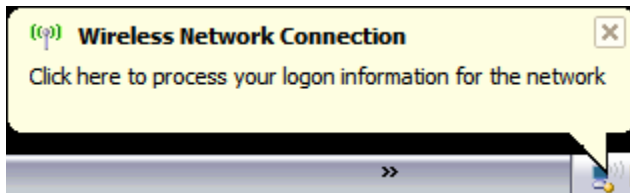
14. Enter your DHE Active Directory credentials.

- **User name:** Your DHE Active Directory username
- **Password:** Your DHE Active Directory password
- **Logon domain:** DHE

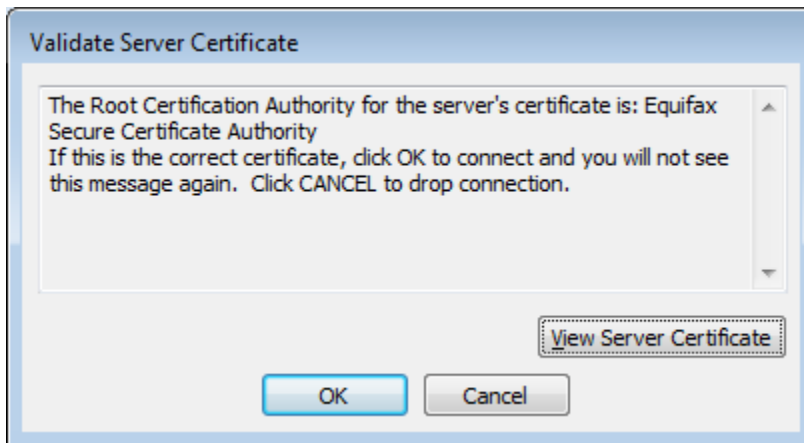


The screenshot shows a standard Windows XP dialog box titled "Enter Credentials". The dialog box has a blue title bar with a close button in the top right corner. The main content area contains a graphic of a globe with two laptops and a keyboard. Below the graphic are three input fields: "User name:", "Password:", and "Logon domain:". At the bottom of the dialog box are two buttons: "OK" and "Cancel".

15. You will see another balloon appear. Click the balloon to validate the server certificate.



16. Click **OK** in the **Validate Server Certificate** box to connect to the diamonds wireless network.



17. You should now be connected to the diamonds wireless network.

